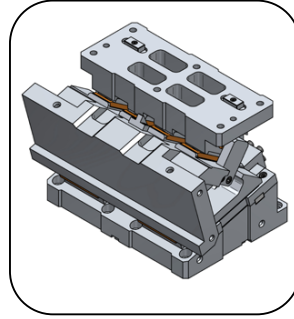
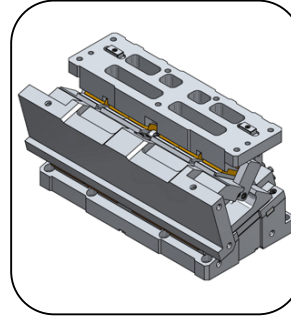


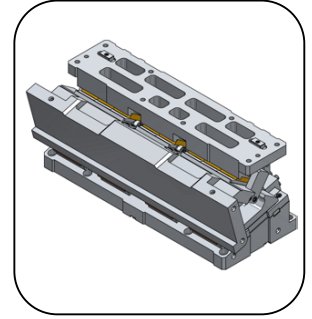
## General information



**LSLD 0500  
LSLD 0600**



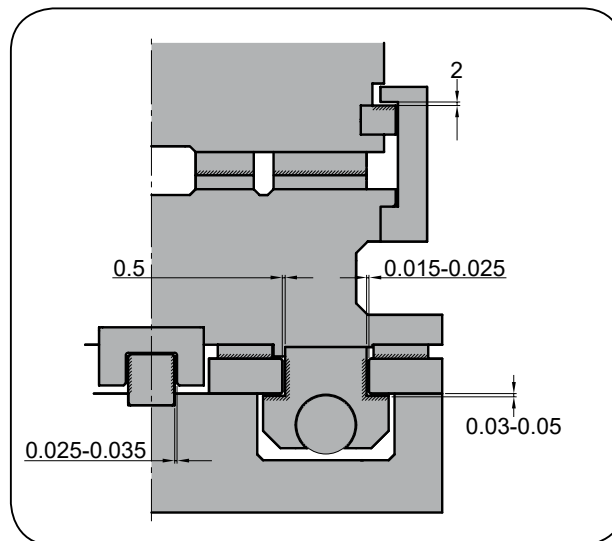
**LSLD 0700  
LSLD 0800**



**LSLD 0900  
LSLD 1000**

- Die mounted cam.
- Angles from 0° to 20° with increments of 5°.
- Rigid guides system.
- Gas spring equipped unit.

## Adjustment clearances



**LSLD 0500  
LSLD 0600  
LSLD 0700  
LSLD 0800  
LSLD 0900  
LSLD 1000**

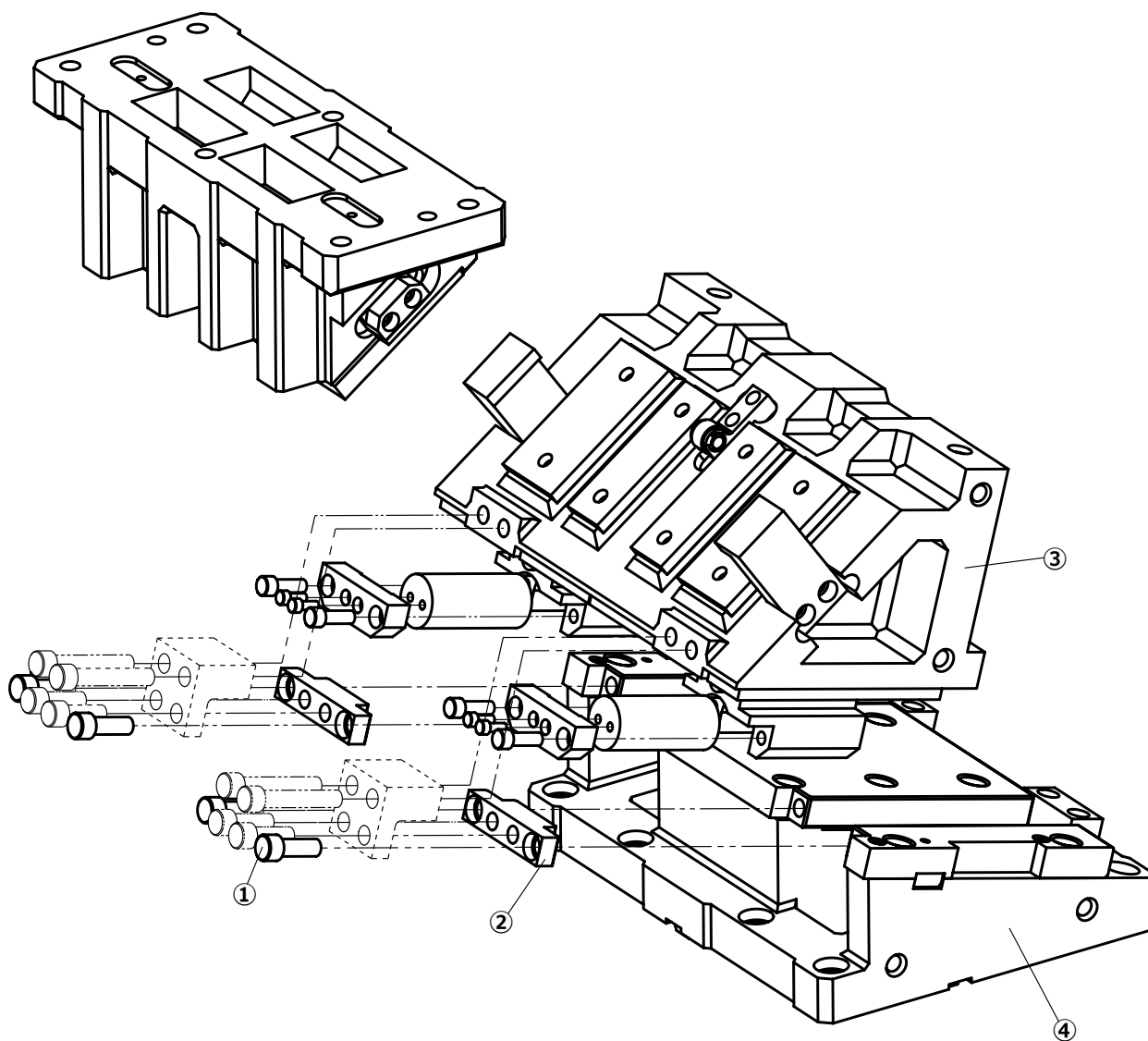
## Assembling and disassembling

### Disassembling process

- Unscrew ① pieces and remove ② stopper plate.
- Remove ③ cam slider from ④ cam holder.

### Assembling process

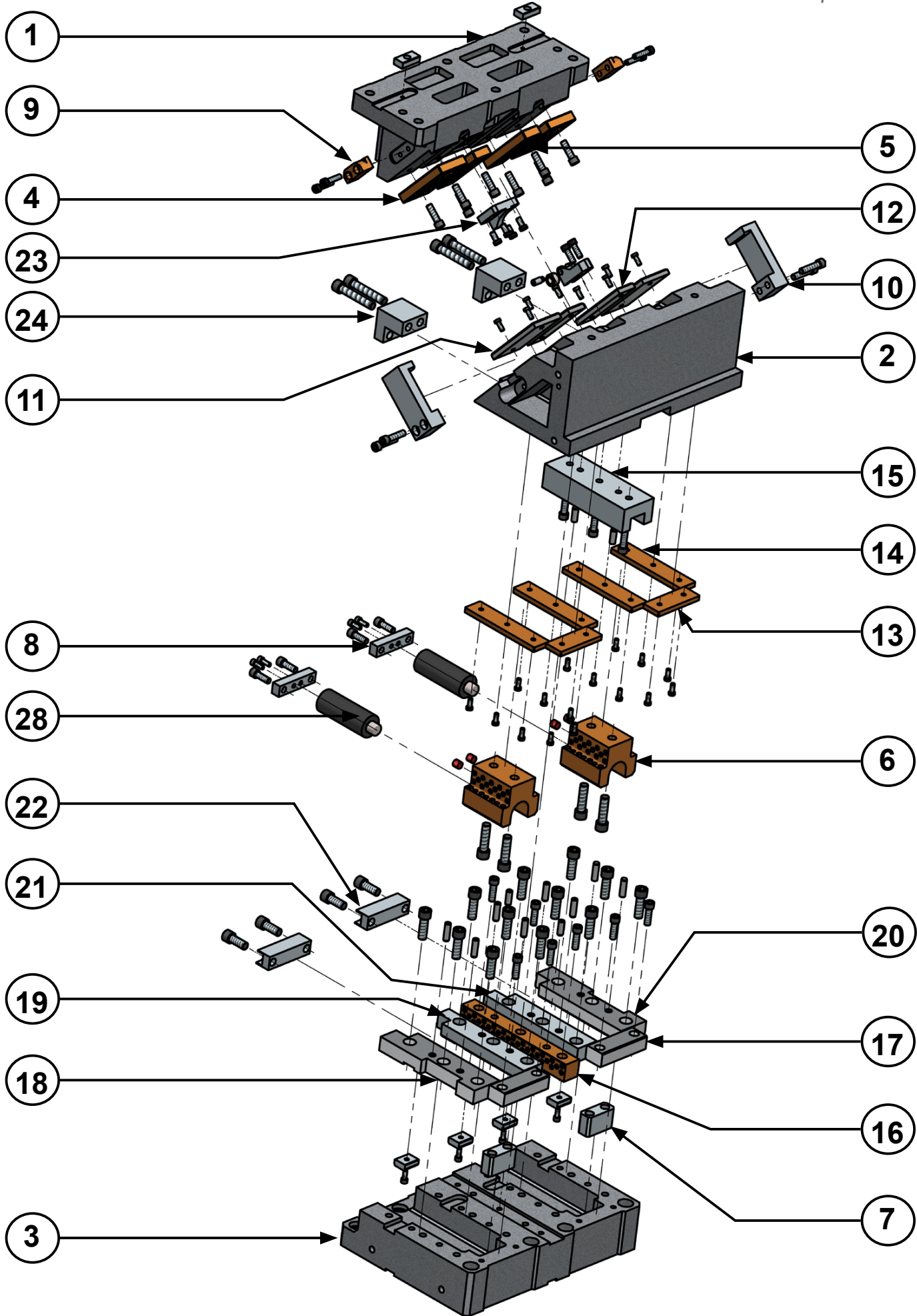
- Make sure that there are no metal shaving or impurities.
- The clearance between the cam holder and slider is controlled.
- Match the serial numbers marked in each part before assembly.
- Make sure that all the screws have been used.





# LSLD 0500-0600

Die mounted cam for pierce and flange

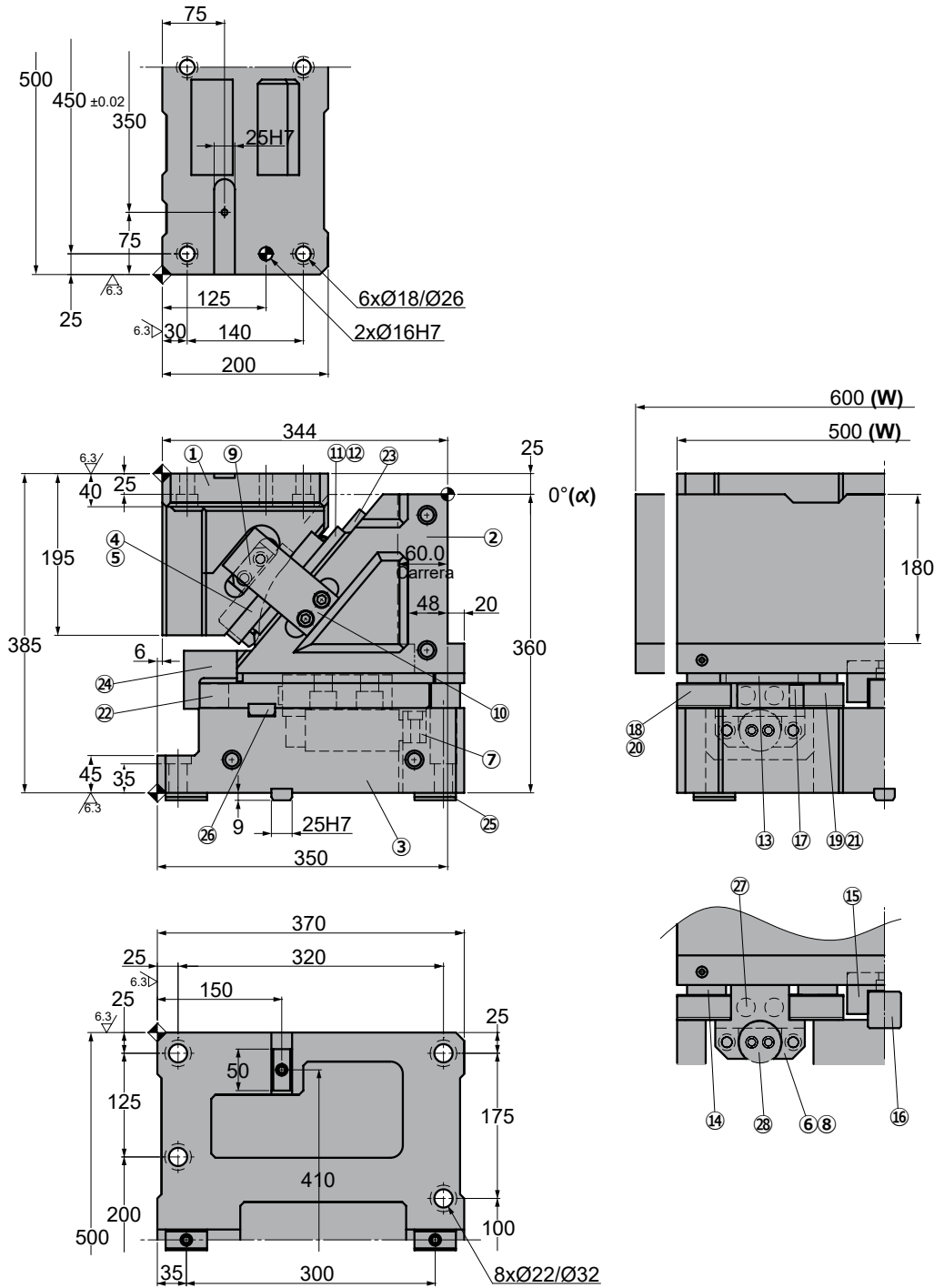


# LSLD 0500-0600

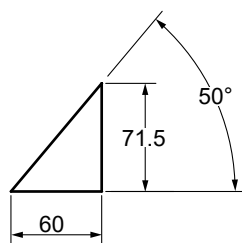
Die mounted cam for pierce and flange



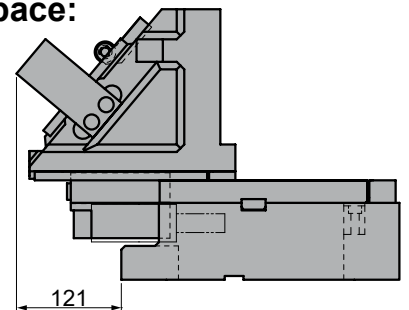
**LSLD 0500 00**  
**LSLD 0600 00**



◦Cam diagram:



◦Disassembling space:





# LSLD 0500-0600

Die mounted cam for pierce and flange

Stroke (mm)	Working force kN - (tons)		Spring Force N - (kgf)		Weight (Kg)	Model	W (mm)	$\alpha$ (mm)
	(1 Million Strokes)	(300.000 Strokes)	Initial F <sub>0</sub>	Final F <sub>1</sub>				
60.0	313.6 (32.0)	940.8 (96.0)	0.0 (0.0)	20800.0 (2121.0)	316	LSLD	0500	00
					325		0600	



Order: Model (W) ( $\alpha$ )  
**LSLD 0500 00**

Standard order example according to catalog sheet.  
 Add options applying options table contents.

## OPTIONS


Order Options: Model (W) ( $\alpha$ )-Option



**SPARE PARTS:**

Ⓒ Gas Spring

## COMPONENTS

No.	Description	Qty.	Material
①	Cam Holder	1	GG25
②	Cam Slider	1	GG25
③	Cam Driver	1	GG25
④	Cam Slider Plate A	2	Bronze + G
⑤	Cam Slider Plate B	2	Bronze + G
⑥	Spring Guide	2	Bronze + G
⑦	Shaft Guide Block	2	CK22
⑧	Spring Guide Plate	2	CK22
⑨	Positive Return A	2	Bronze + G
⑩	Positive Return B	2	CK45
⑪	Lower Plate A	2	CK45
⑫	Lower Plate B	2	CK45
⑬	Lower Cam Slider Plate A	2	Bronze + G
⑭	Lower Cam Slider Plate B	4	Bronze + G
⑮	Central Guide Plate A	1	CK45

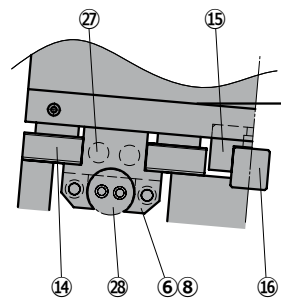
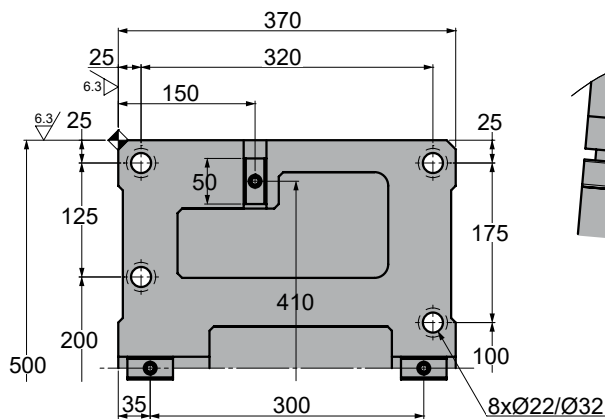
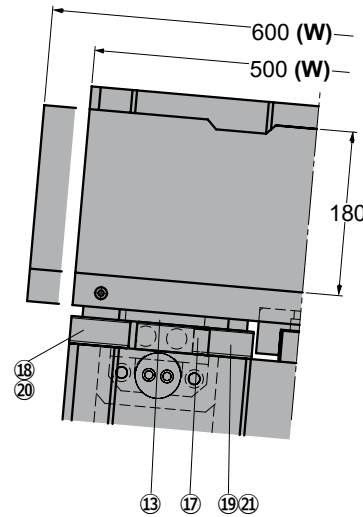
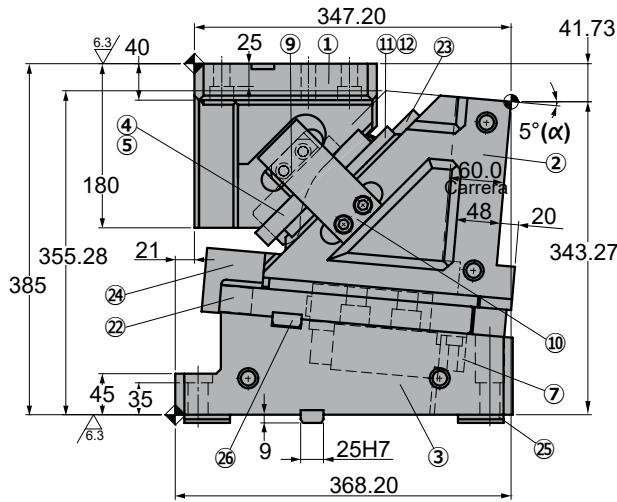
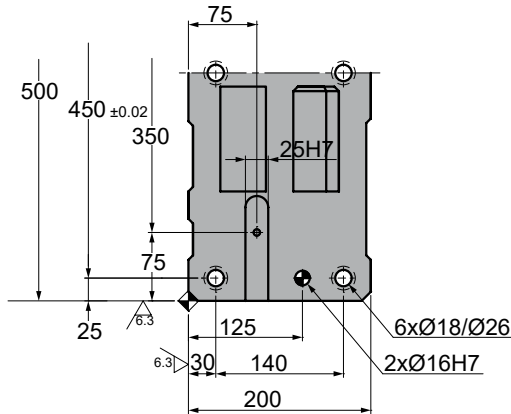
No.	Description	Qty.	Material
⑯	Central Guide Plate B	1	Bronze + G
⑰	Base Plate A	2	CK45
⑱	Base Plate B	1	CK45
⑲	Base Plate C	1	CK45
⑳	Base Plate D	1	CK45
㉑	Base Plate E	1	CK45
㉒	Stopper Plate	2	CK45
㉓	Bracket Block	1	
㉔	Locking plate	2	CK45
㉕	Key A	4	CK45
㉖	Key B	4	CK45
㉗	Stopper	4	Urethane
㉘	Gas Spring	2	FD 750 063

# LSLD 0500-0600

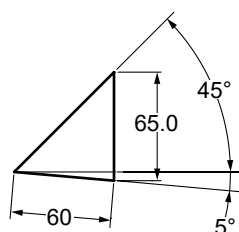
Die mounted cam for pierce and flange



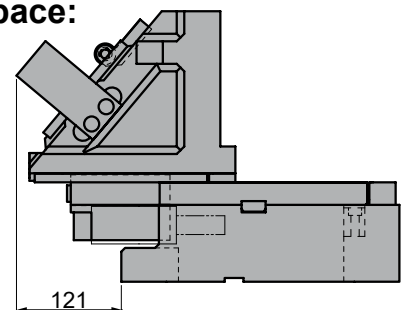
**LSLD 0500 05**  
**LSLD 0600 05**



◦Cam diagram:



◦Disassembling space:





# LSLD 0500-0600

Die mounted cam for pierce and flange

Stroke (mm)	Working force kN - (tons)		Spring Force N - (kgf)		Weight (Kg)	Model	W (mm)	$\alpha$ (mm)
	(1 Million Strokes)	(300.000 Strokes)	Initial F <sub>0</sub>	Final F <sub>1</sub>				
60.0	313.6 (32.0)	940.8 (96.0)	0.0 (0.0)	20800.0 (2121.0)	310	LSLD	0500	05
					318		0600	



Order: Model (W) ( $\alpha$ )  
**LSLD 0500 05**

Standard order example according to catalog sheet.  
 Add options applying options table contents.

## OPTIONS


Order Options: Model (W) ( $\alpha$ )-Option



**SPARE PARTS:**  
 28 Gas Spring

## COMPONENTS

No.	Description	Qty.	Material
①	Cam Holder	1	GG25
②	Cam Slider	1	GG25
③	Cam Driver	1	GG25
④	Cam Slider Plate A	2	Bronze + G
⑤	Cam Slider Plate B	2	Bronze + G
⑥	Spring Guide	2	Bronze + G
⑦	Shaft Guide Block	2	CK22
⑧	Spring Guide Plate	2	CK22
⑨	Positive Return A	2	Bronze + G
⑩	Positive Return B	2	CK45
⑪	Lower Plate A	2	CK45
⑫	Lower Plate B	2	CK45
⑬	Lower Cam Slider Plate A	2	Bronze + G
⑭	Lower Cam Slider Plate B	4	Bronze + G
⑮	Central Guide Plate A	1	CK45

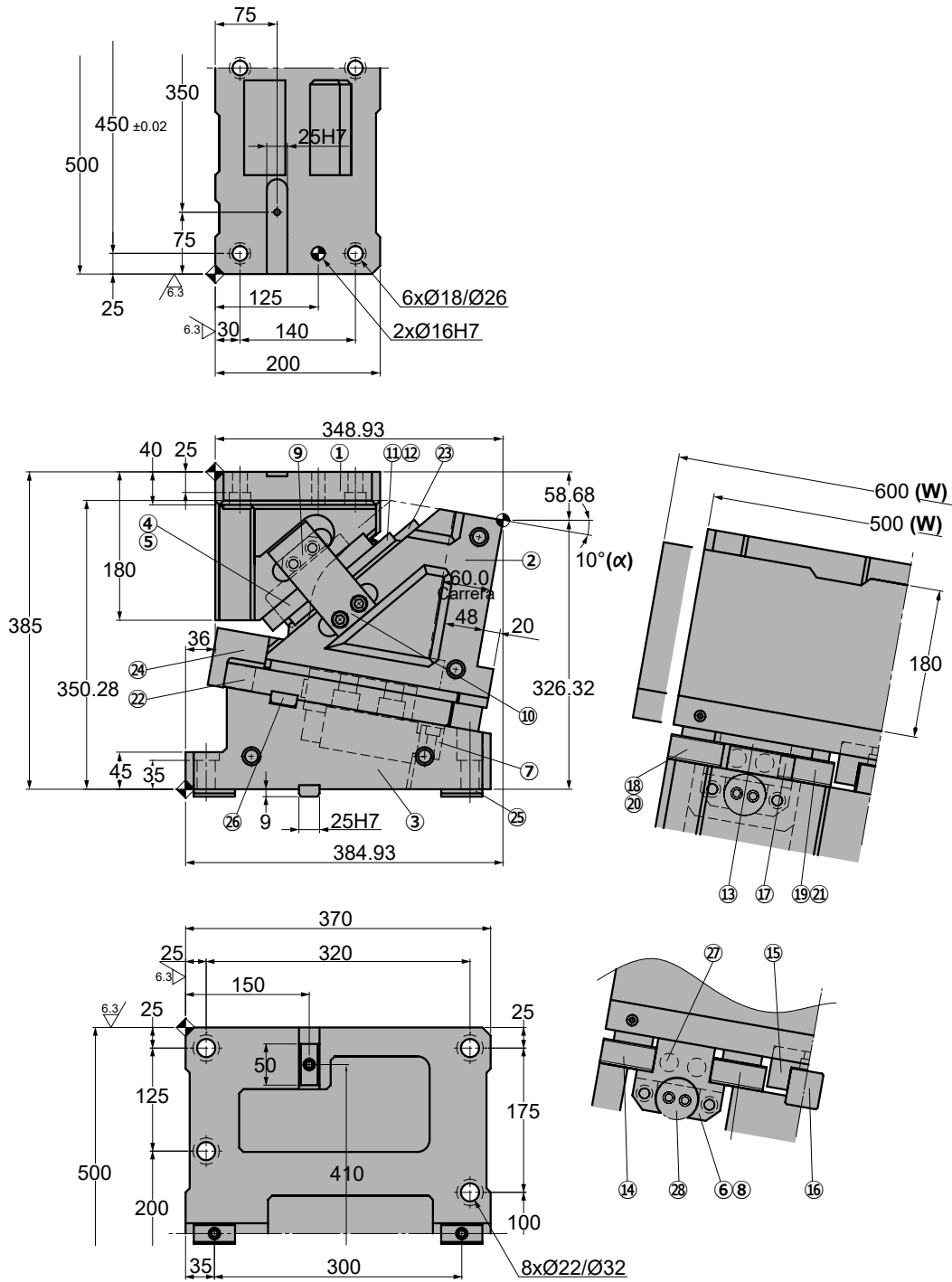
No.	Description	Qty.	Material
⑯	Central Guide Plate B	1	Bronze + G
⑰	Base Plate A	2	CK45
⑱	Base Plate B	1	CK45
⑲	Base Plate C	1	CK45
⑳	Base Plate D	1	CK45
㉑	Base Plate E	1	CK45
㉒	Stopper Plate	2	CK45
㉓	Bracket Block	1	
㉔	Locking plate	2	CK45
㉕	Key A	4	CK45
㉖	Key B	4	CK45
㉗	Stopper	4	Urethane
㉘	Gas Spring	2	FD 750 063

# LSLD 0500-0600

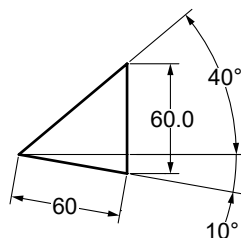
Die mounted cam for pierce and flange



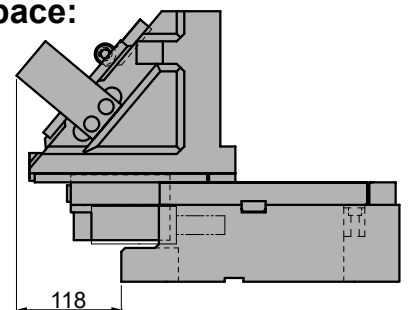
**LSLD 0500 10**  
**LSLD 0600 10**



◦Cam diagram:



◦Disassembling space:







# LSLD 0500-0600

Die mounted cam for pierce and flange

Stroke (mm)	Working force kN - (tons)		Spring Force N - (kgf)		Weight (Kg)	Model	W (mm)	$\alpha$ (mm)
	(1 Million Strokes)	(300.000 Strokes)	Initial F <sub>0</sub>	Final F <sub>1</sub>				
60.0	313.6 (32.0)	940.8 (96.0)	0.0 (0.0)	20800.0 (2121.0)	306	LSLD	0500	10
					314		0600	



Order: Model (W) ( $\alpha$ )  
**LSLD 0500 10**

Standard order example according to catalog sheet.  
 Add options applying options table contents.

## OPTIONS


Order Options: Model (W) ( $\alpha$ )-Option



**SPARE PARTS:**  
 28 Gas Spring

## COMPONENTS

No.	Description	Qty.	Material
①	Cam Holder	1	GG25
②	Cam Slider	1	GG25
③	Cam Driver	1	GG25
④	Cam Slider Plate A	2	Bronze + G
⑤	Cam Slider Plate B	2	Bronze + G
⑥	Spring Guide	2	Bronze + G
⑦	Shaft Guide Block	2	CK22
⑧	Spring Guide Plate	2	CK22
⑨	Positive Return A	2	Bronze + G
⑩	Positive Return B	2	CK45
⑪	Lower Plate A	2	CK45
⑫	Lower Plate B	2	CK45
⑬	Lower Cam Slider Plate A	2	Bronze + G
⑭	Lower Cam Slider Plate B	4	Bronze + G
⑮	Central Guide Plate A	1	CK45

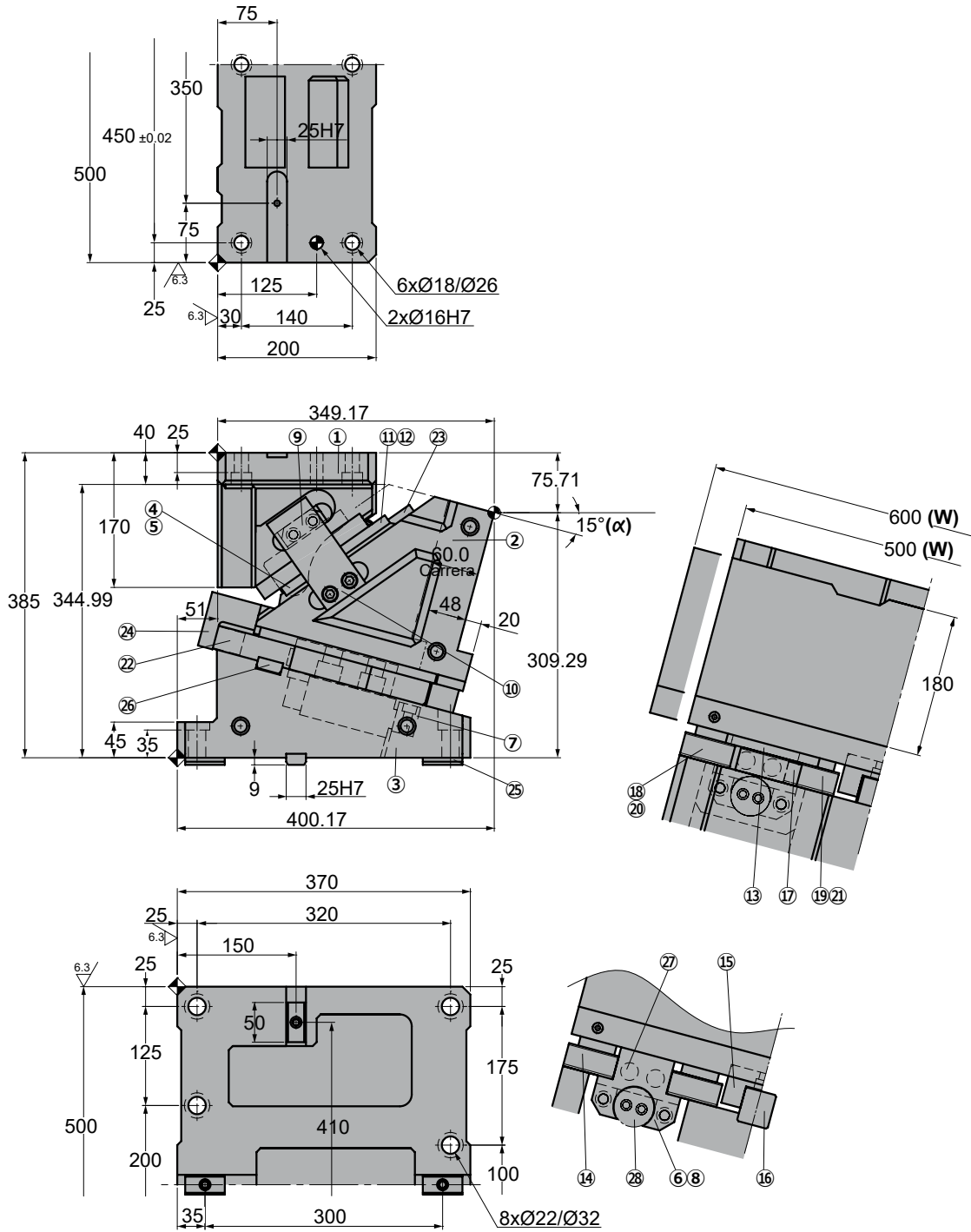
No.	Description	Qty.	Material
⑯	Central Guide Plate B	1	Bronze + G
⑰	Base Plate A	2	CK45
⑱	Base Plate B	1	CK45
⑲	Base Plate C	1	CK45
⑳	Base Plate D	1	CK45
㉑	Base Plate E	1	CK45
㉒	Stopper Plate	2	CK45
㉓	Bracket Block	1	
㉔	Locking plate	2	CK45
㉕	Key A	4	CK45
㉖	Key B	4	CK45
㉗	Stopper	4	Urethane
㉘	Gas Spring	2	FD 750 063

# LSLD 0500-0600

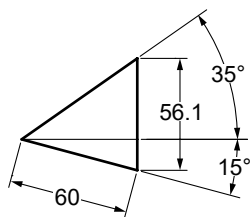
Die mounted cam for pierce and flange



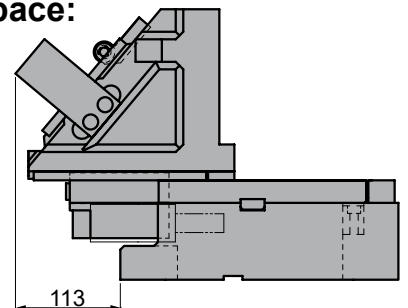
**LSLD 0500 15**  
**LSLD 0600 15**



◦Cam diagram:



◦Disassembling space:





# LSLD 0500-0600

Die mounted cam for pierce and flange

Stroke (mm)	Working force kN - (tons)		Spring Force N - (kgf)		Weight (Kg)	Model	W (mm)	$\alpha$ (mm)
	(1 Million Strokes)	(300.000 Strokes)	Initial F <sub>0</sub>	Final F <sub>1</sub>				
60.0	313.6 (32.0)	940.8 (96.0)	0.0 (0.0)	20800.0 (2121.0)	302	LSLD	0500	15
					310		0600	



Order: Model (W) ( $\alpha$ )  
**LSLD 0500 15**

Standard order example according to catalog sheet.  
 Add options applying options table contents.

## OPTIONS


Order Options: Model (W) ( $\alpha$ )-Option



**SPARE PARTS:**

⑳ Gas Spring

## COMPONENTS

No.	Description	Qty.	Material
①	Cam Holder	1	GG25
②	Cam Slider	1	GG25
③	Cam Driver	1	GG25
④	Cam Slider Plate A	2	Bronze + G
⑤	Cam Slider Plate B	2	Bronze + G
⑥	Spring Guide	2	Bronze + G
⑦	Shaft Guide Block	2	CK22
⑧	Spring Guide Plate	2	CK22
⑨	Positive Return A	2	Bronze + G
⑩	Positive Return B	2	CK45
⑪	Lower Plate A	2	CK45
⑫	Lower Plate B	2	CK45
⑬	Lower Cam Slider Plate A	2	Bronze + G
⑭	Lower Cam Slider Plate B	4	Bronze + G
⑮	Central Guide Plate A	1	CK45

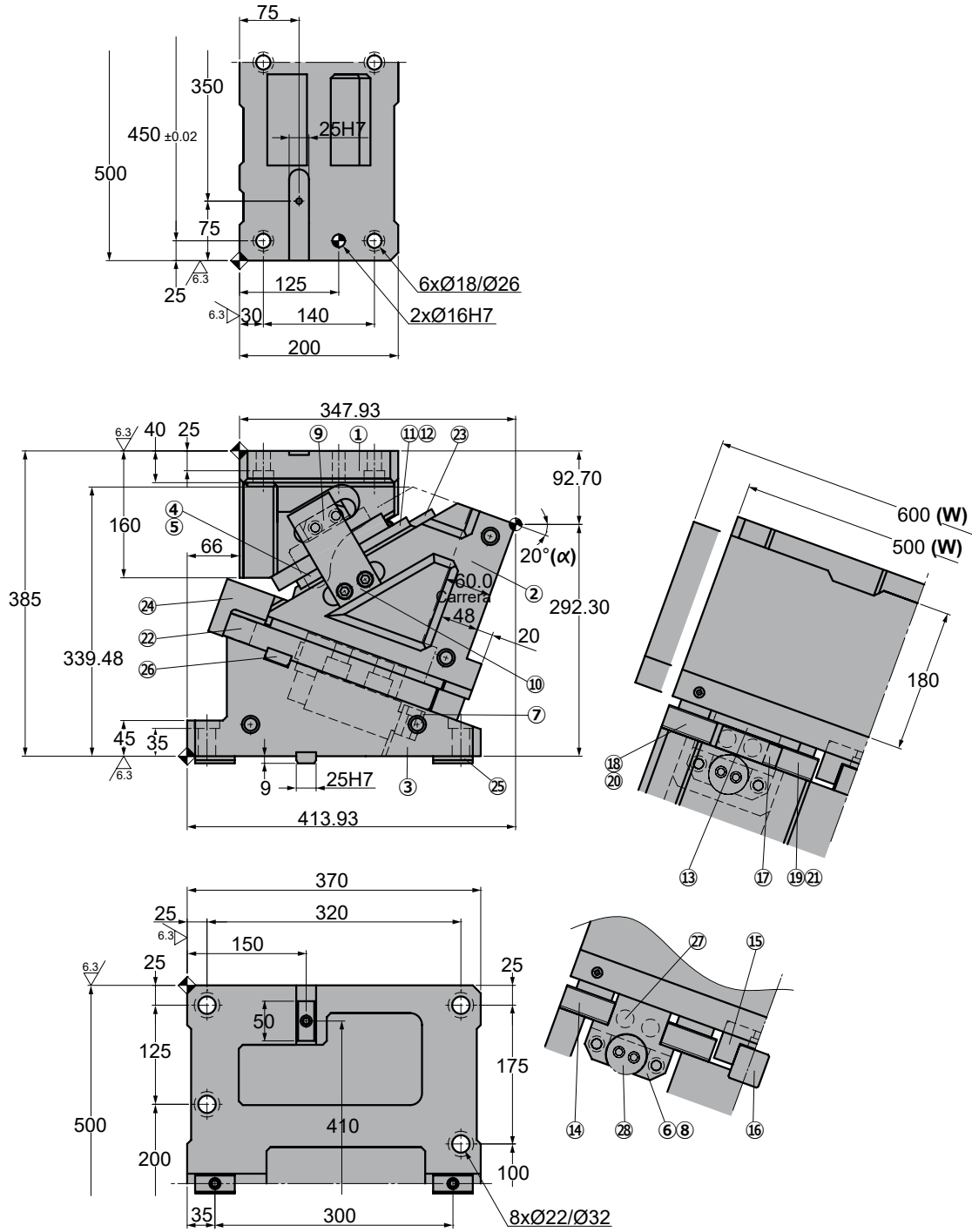
No.	Description	Qty.	Material
⑯	Central Guide Plate B	1	Bronze + G
⑰	Base Plate A	2	CK45
⑱	Base Plate B	1	CK45
⑲	Base Plate C	1	CK45
⑳	Base Plate D	1	CK45
㉑	Base Plate E	1	CK45
㉒	Stopper Plate	2	CK45
㉓	Bracket Block	1	
㉔	Locking plate	2	CK45
㉕	Key A	4	CK45
㉖	Key B	4	CK45
㉗	Stopper	4	Urethane
㉘	Gas Spring	2	FD 750 063

# LSLD 0500-0600

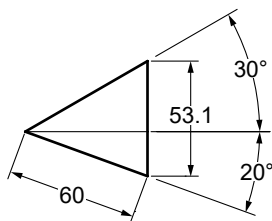
Die mounted cam for pierce and flange



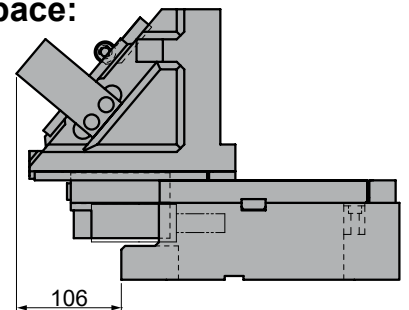
**LSLD 0500 20**  
**LSLD 0600 20**



◦Cam diagram:



◦Disassembling space:





# LSLD 0500-0600

Die mounted cam for pierce and flange

Stroke (mm)	Working force kN - (tons)		Spring Force N - (kgf)		Weight (Kg)	Model	W (mm)	$\alpha$ (mm)
	(1 Million Strokes)	(300.000 Strokes)	Initial F <sub>0</sub>	Final F <sub>1</sub>				
60.0	313.6 (32.0)	940.8 (96.0)	0.0 (0.0)	20800.0 (2121.0)	298	LSLD	0500	20
					306		0600	



Order: Model (W) ( $\alpha$ )  
**LSLD 0500 20**

Standard order example according to catalog sheet.  
 Add options applying options table contents.

## OPTIONS


Order Options: Model (W) ( $\alpha$ )-Option



**SPARE PARTS:**  
 28 Gas Spring

## COMPONENTS

No.	Description	Qty.	Material
①	Cam Holder	1	GG25
②	Cam Slider	1	GG25
③	Cam Driver	1	GG25
④	Cam Slider Plate A	2	Bronze + G
⑤	Cam Slider Plate B	2	Bronze + G
⑥	Spring Guide	2	Bronze + G
⑦	Shaft Guide Block	2	CK22
⑧	Spring Guide Plate	2	CK22
⑨	Positive Return A	2	Bronze + G
⑩	Positive Return B	2	CK45
⑪	Lower Plate A	2	CK45
⑫	Lower Plate B	2	CK45
⑬	Lower Cam Slider Plate A	2	Bronze + G
⑭	Lower Cam Slider Plate B	4	Bronze + G
⑮	Central Guide Plate A	1	CK45

No.	Description	Qty.	Material
⑯	Central Guide Plate B	1	Bronze + G
⑰	Base Plate A	2	CK45
⑱	Base Plate B	1	CK45
⑲	Base Plate C	1	CK45
⑳	Base Plate D	1	CK45
㉑	Base Plate E	1	CK45
㉒	Stopper Plate	2	CK45
㉓	Bracket Block	1	
㉔	Locking plate	2	CK45
㉕	Key A	4	CK45
㉖	Key B	4	CK45
㉗	Stopper	4	Urethane
㉘	Gas Spring	2	FD 750 063

# LSLD 0500-0600

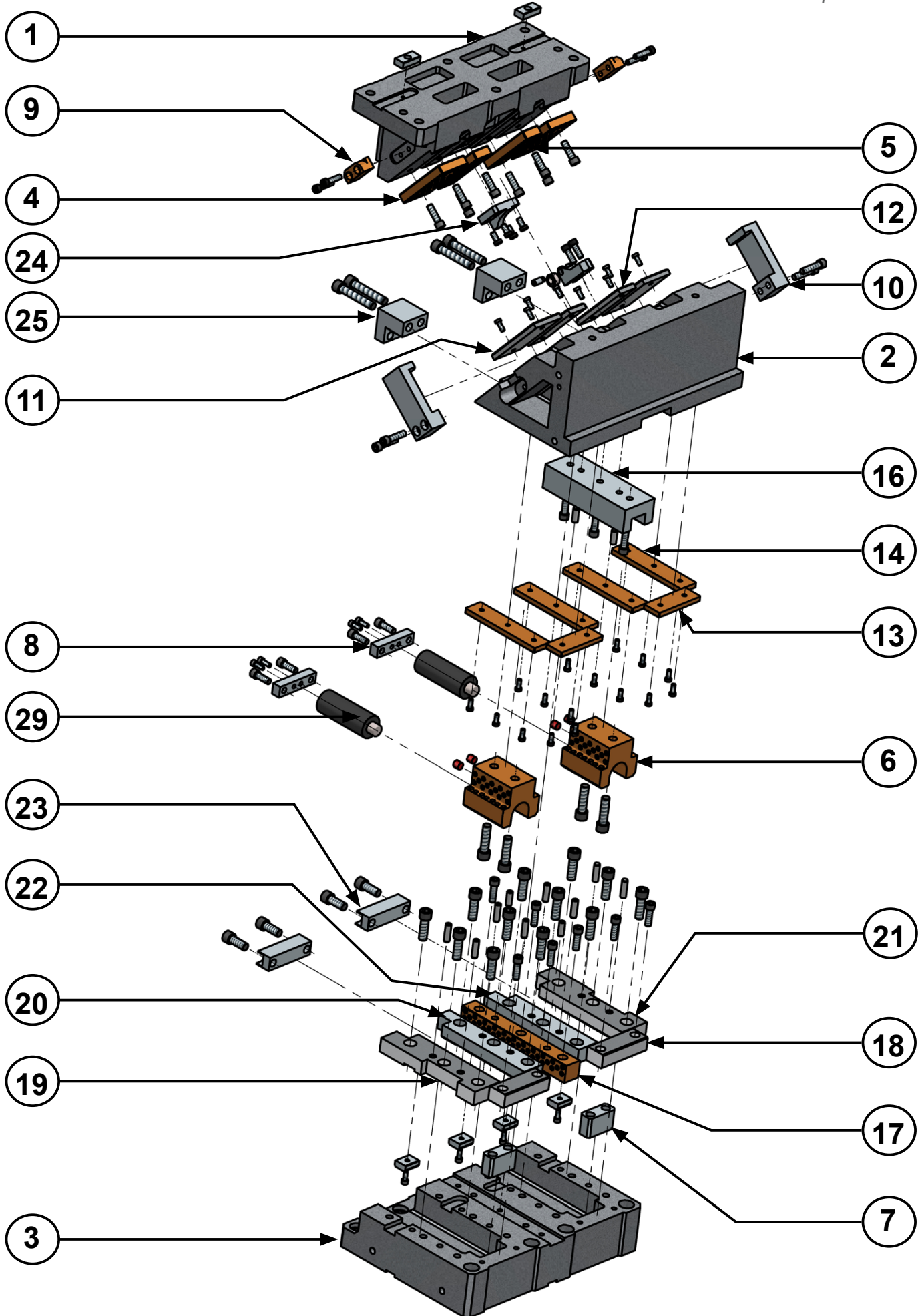


*Die mounted cam for pierce and flange*



# LSLD 0700-0800

Die mounted cam for pierce and flange









# LSLD 0700-0800

Die mounted cam for pierce and flange

Stroke (mm)	Working force kN - (tons)		Spring Force N - (kgf)		Weight (Kg)	Model	W (mm)	$\alpha$ (mm)
	(1 Million Strokes)	(300.000 Strokes)	Initial F <sub>0</sub>	Final F <sub>1</sub>				
60.0	470.4 (48.0)	1411.2 (144.0)	0.0 (0.0)	20800.0 (2121.0)	436	LSLD	0700	00
					446		0800	



Order: Model (W) ( $\alpha$ )

**LSLD 0700 00**

Standard order example according to catalog sheet. Add options applying options table contents.

## OPTIONS


Order Options: Model (W) ( $\alpha$ )-Option



**SPARE PARTS:**

⑲ Gas Spring

## COMPONENTS

No.	Description	Qty.	Material
①	Cam Holder	1	GG25
②	Cam Slider	1	GG25
③	Cam Driver	1	GG25
④	Cam Slider Plate A	2	Bronze + G
⑤	Cam Slider Plate B	4	Bronze + G
⑥	Spring Guide	2	Bronze + G
⑦	Shaft Guide Block	2	CK22
⑧	Spring Guide Plate	2	CK22
⑨	Positive Return A	2	Bronze + G
⑩	Positive Return B	2	CK45
⑪	Lower Plate A	2	CK45
⑫	Lower Plate B	4	CK45
⑬	Lower Cam Slider Plate A	2	Bronze + G
⑭	Lower Cam Slider Plate B	2	Bronze + G
⑮	Lower Cam Slider Plate C	2	Bronze + G

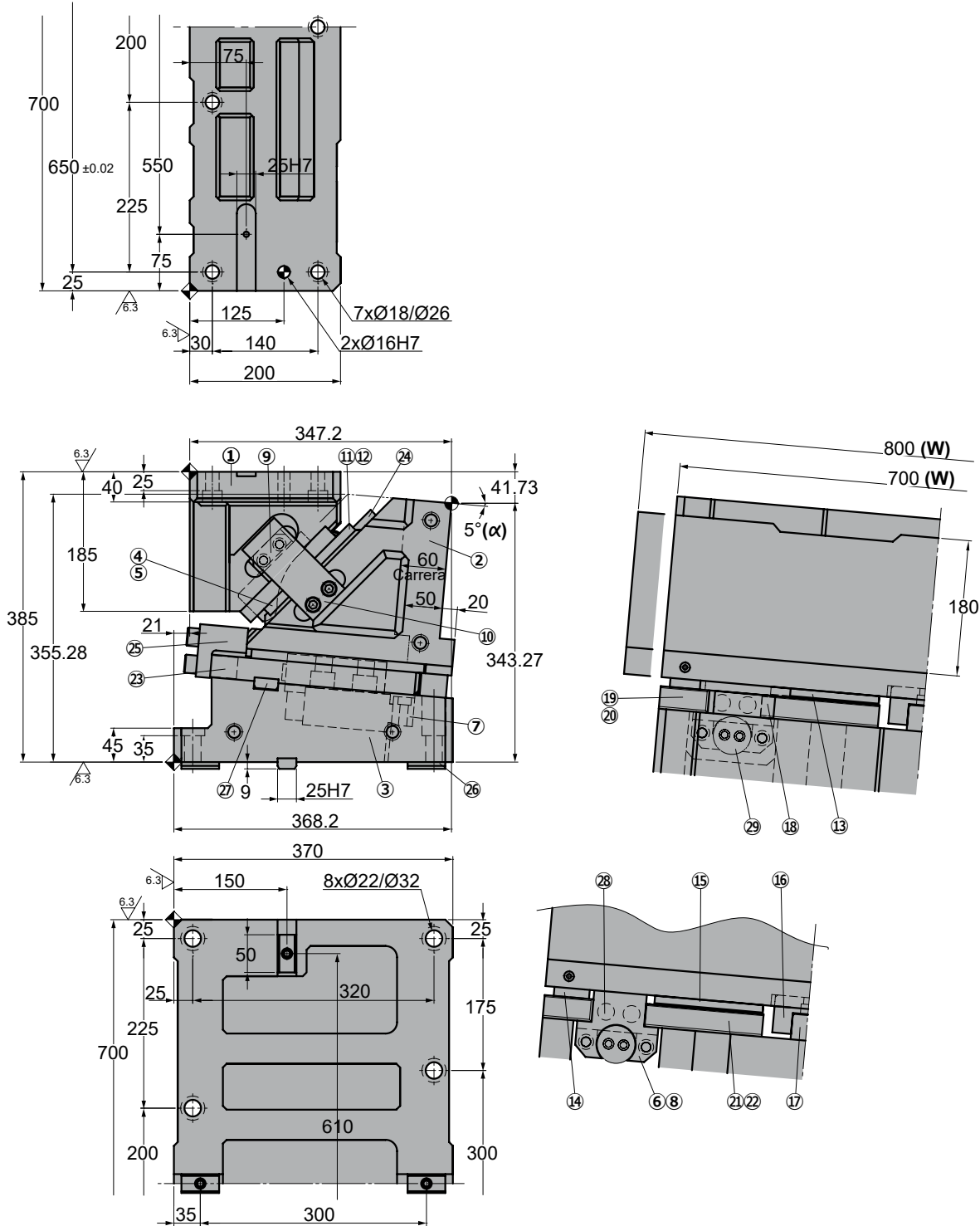
No.	Description	Qty.	Material
⑯	Central Guide Plate A	1	CK45
⑰	Central Guide Plate B	1	Bronze + G
⑱	Base Plate A	2	CK45
⑲	Base Plate B	1	CK45
⑳	Base Plate C	1	CK45
㉑	Base Plate D	1	CK45
㉒	Base Plate E	1	CK45
㉓	Stopper Plate	2	CK45
㉔	Bracket Block	1	
㉕	Locking plate	2	CK45
㉖	Key A	4	CK45
㉗	Key B	6	CK45
㉘	Stopper	4	Urethane
㉙	Gas Spring	2	FD 750 063

# LSLD 0700-0800

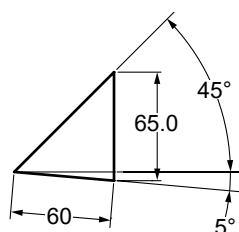
Die mounted cam for pierce and flange



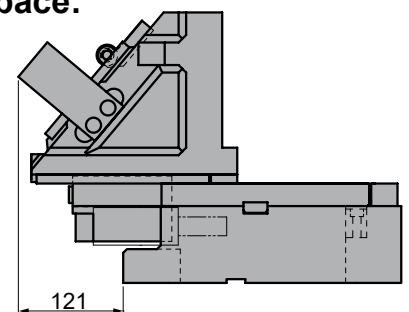
## LSLD 0700 05 LSLD 0800 05



### ◦Cam diagram:



### ◦Disassembling space:





# LSLD 0700-0800

Die mounted cam for pierce and flange

Stroke (mm)	Working force kN - (tons)		Spring Force N - (kgf)		Weight (Kg)	Model	W (mm)	$\alpha$ (mm)
	(1 Million Strokes)	(300.000 Strokes)	Initial F <sub>0</sub>	Final F <sub>1</sub>				
60.0	470.4 (48.0)	1411.2 (144.0)	0.0 (0.0)	20800.0 (2121.0)	429	LSLD	0700	05
					438		0800	



Order: Model (W) ( $\alpha$ )  
**LSLD 0700 05**

Standard order example according to catalog sheet. Add options applying options table contents.

## OPTIONS


Order Options: Model (W) ( $\alpha$ )-Option



**SPARE PARTS:**

⑲ Gas Spring

## COMPONENTS

No.	Description	Qty.	Material
①	Cam Holder	1	GG25
②	Cam Slider	1	GG25
③	Cam Driver	1	GG25
④	Cam Slider Plate A	2	Bronze + G
⑤	Cam Slider Plate B	4	Bronze + G
⑥	Spring Guide	2	Bronze + G
⑦	Shaft Guide Block	2	CK22
⑧	Spring Guide Plate	2	CK22
⑨	Positive Return A	2	Bronze + G
⑩	Positive Return B	2	CK45
⑪	Lower Plate A	2	CK45
⑫	Lower Plate B	4	CK45
⑬	Lower Cam Slider Plate A	2	Bronze + G
⑭	Lower Cam Slider Plate B	2	Bronze + G
⑮	Lower Cam Slider Plate C	2	Bronze + G

No.	Description	Qty.	Material
⑯	Central Guide Plate A	1	CK45
⑰	Central Guide Plate B	1	Bronze + G
⑱	Base Plate A	2	CK45
⑲	Base Plate B	1	CK45
⑳	Base Plate C	1	CK45
㉑	Base Plate D	1	CK45
㉒	Base Plate E	1	CK45
㉓	Stopper Plate	2	CK45
㉔	Bracket Block	1	
㉕	Locking plate	2	CK45
㉖	Key A	4	CK45
㉗	Key B	6	CK45
㉘	Stopper	4	Urethane
㉙	Gas Spring	2	FD 750 063

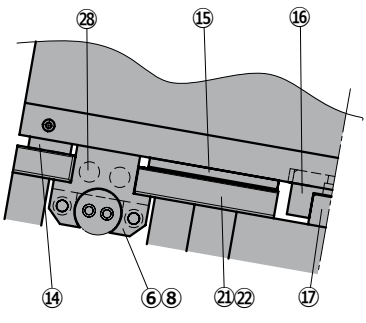
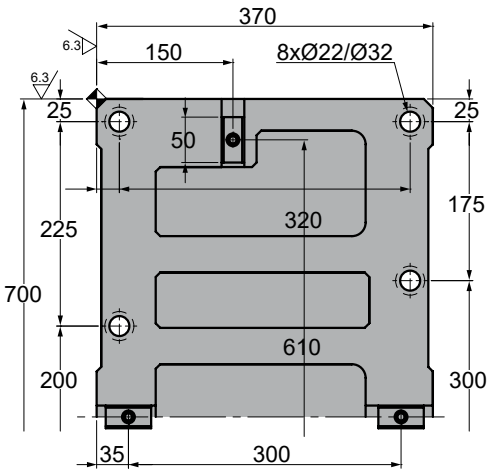
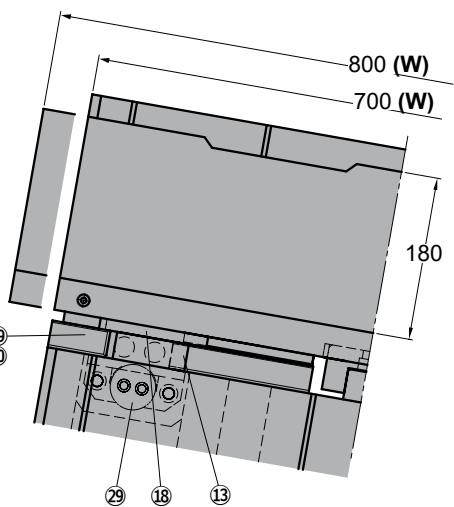
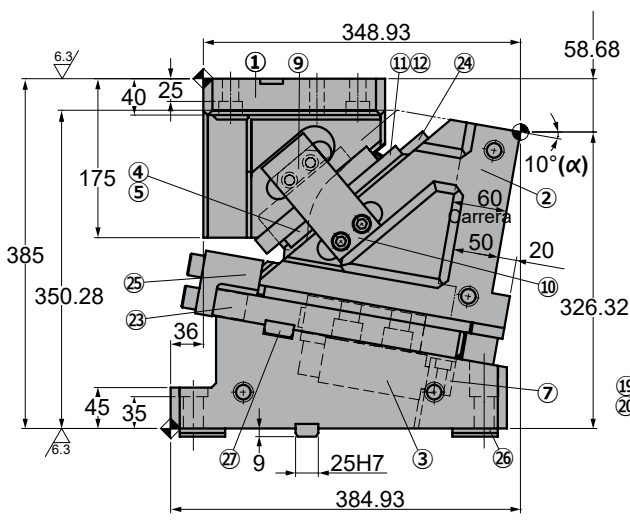
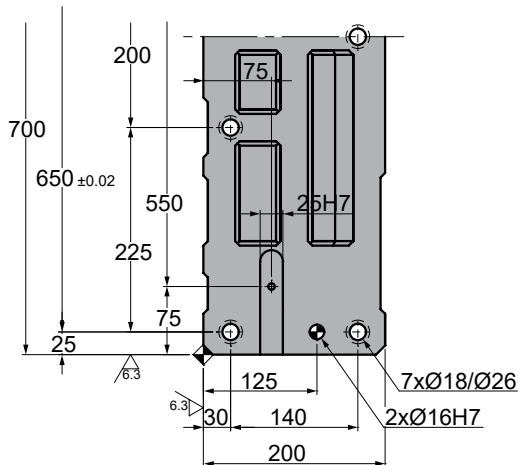
# LSLD 0700-0800

Die mounted cam for pierce and flange

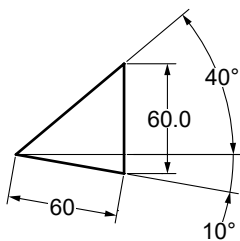


**LSLD 0700 10**

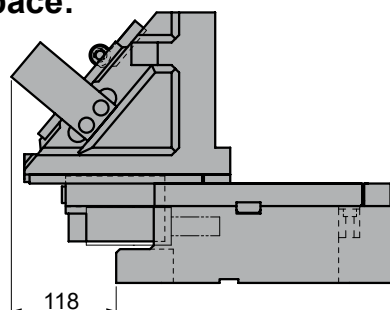
**LSLD 0800 10**



◦Cam diagram:



◦Disassembling space:





# LSLD 0700-0800

Die mounted cam for pierce and flange

Stroke (mm)	Working force kN - (tons)		Spring Force N - (kgf)		Weight (Kg)	Model	W (mm)	$\alpha$ (mm)
	(1 Million Strokes)	(300.000 Strokes)	Initial F <sub>0</sub>	Final F <sub>1</sub>				
60.0	470.4 (48.0)	1411.2 (144.0)	0.0 (0.0)	20800.0 (2121.0)	421	LSLD	0700	10
					430		0800	



Order: Model (W) ( $\alpha$ )

**LSLD 0700 10**

Standard order example according to catalog sheet.  
Add options applying options table contents.

## OPTIONS


Order Options: Model (W) ( $\alpha$ )-Option



**SPARE PARTS:**

⑲ Gas Spring

## COMPONENTS

No.	Description	Qty.	Material
①	Cam Holder	1	GG25
②	Cam Slider	1	GG25
③	Cam Driver	1	GG25
④	Cam Slider Plate A	2	Bronze + G
⑤	Cam Slider Plate B	4	Bronze + G
⑥	Spring Guide	2	Bronze + G
⑦	Shaft Guide Block	2	CK22
⑧	Spring Guide Plate	2	CK22
⑨	Positive Return A	2	Bronze + G
⑩	Positive Return B	2	CK45
⑪	Lower Plate A	2	CK45
⑫	Lower Plate B	4	CK45
⑬	Lower Cam Slider Plate A	2	Bronze + G
⑭	Lower Cam Slider Plate B	2	Bronze + G
⑮	Lower Cam Slider Plate C	2	Bronze + G

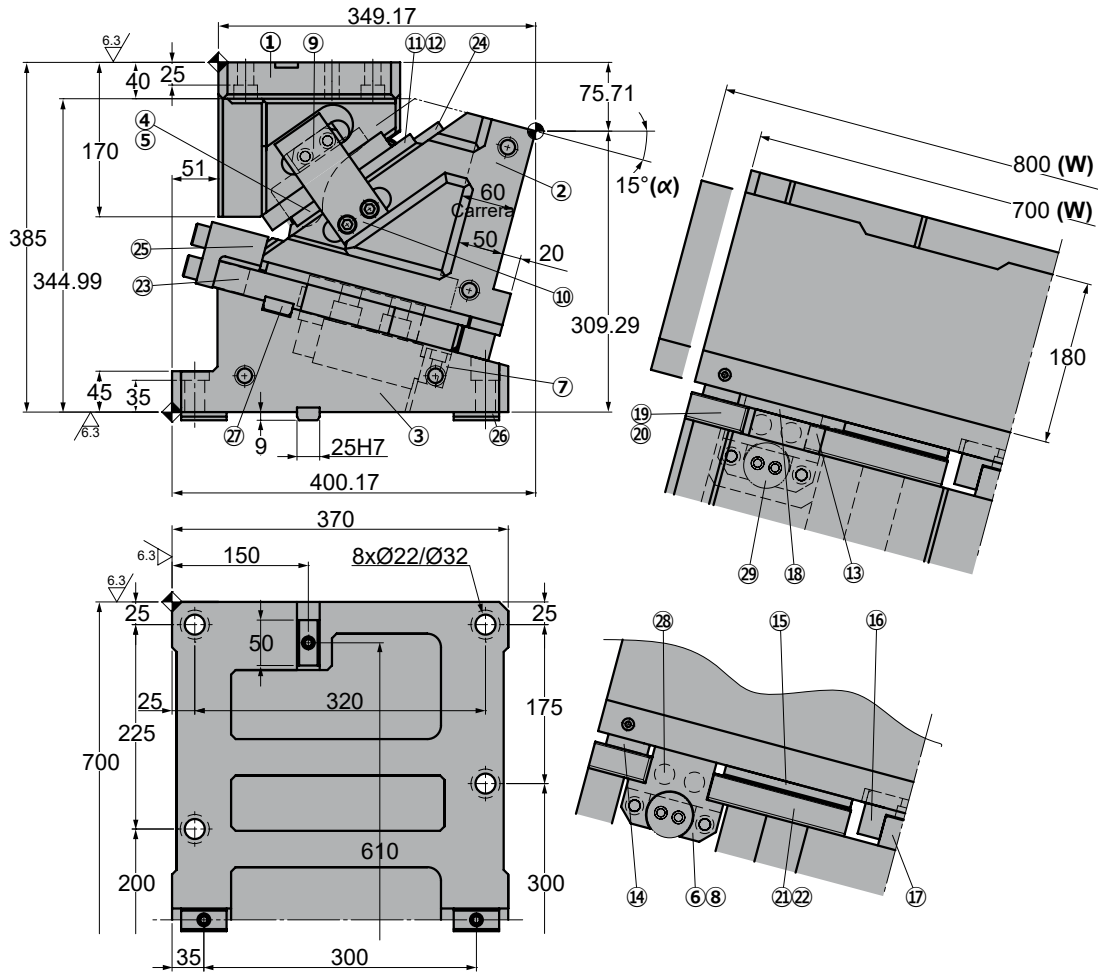
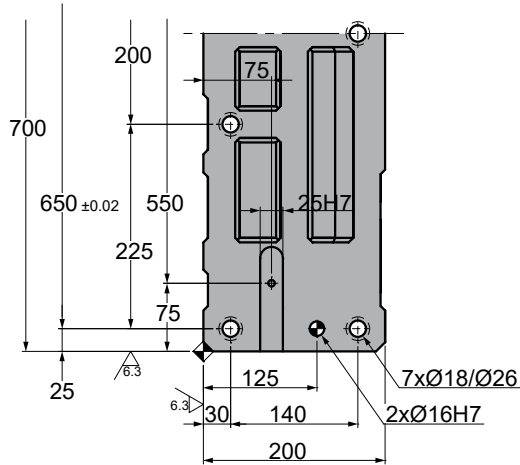
No.	Description	Qty.	Material
⑯	Central Guide Plate A	1	CK45
⑰	Central Guide Plate B	1	Bronze + G
⑱	Base Plate A	2	CK45
⑲	Base Plate B	1	CK45
⑳	Base Plate C	1	CK45
㉑	Base Plate D	1	CK45
㉒	Base Plate E	1	CK45
㉓	Stopper Plate	2	CK45
㉔	Bracket Block	1	
㉕	Locking plate	2	CK45
㉖	Key A	4	CK45
㉗	Key B	6	CK45
㉘	Stopper	4	Urethane
㉙	Gas Spring	2	FD 750 063

# LSLD 0700-0800

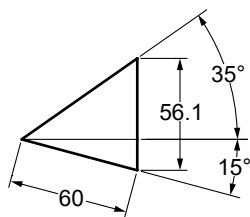
Die mounted cam for pierce and flange



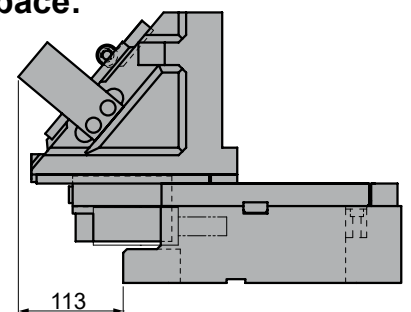
## LSLD 0700 15 LSLD 0800 15



### ◦Cam diagram:



### ◦Disassembling space:





# LSLD 0700-0800

Die mounted cam for pierce and flange

Stroke (mm)	Working force kN - (tons)		Spring Force N - (kgf)		Weight (Kg)	Model	W (mm)	$\alpha$ (mm)
	(1 Million Strokes)	(300.000 Strokes)	Initial F <sub>0</sub>	Final F <sub>1</sub>				
60.0	470.4 (48.0)	1411.2 (144.0)	0.0 (0.0)	20800.0 (2121.0)	415	LSLD	0700	15
					424		0800	



Order: Model (W) ( $\alpha$ )  
**LSLD 0700 15**

Standard order example according to catalog sheet. Add options applying options table contents.

## OPTIONS


Order Options: Model (W) ( $\alpha$ )-Option



**SPARE PARTS:**

⑲ Gas Spring

## COMPONENTS

No.	Description	Qty.	Material
①	Cam Holder	1	GG25
②	Cam Slider	1	GG25
③	Cam Driver	1	GG25
④	Cam Slider Plate A	2	Bronze + G
⑤	Cam Slider Plate B	4	Bronze + G
⑥	Spring Guide	2	Bronze + G
⑦	Shaft Guide Block	2	CK22
⑧	Spring Guide Plate	2	CK22
⑨	Positive Return A	2	Bronze + G
⑩	Positive Return B	2	CK45
⑪	Lower Plate A	2	CK45
⑫	Lower Plate B	4	CK45
⑬	Lower Cam Slider Plate A	2	Bronze + G
⑭	Lower Cam Slider Plate B	2	Bronze + G
⑮	Lower Cam Slider Plate C	2	Bronze + G

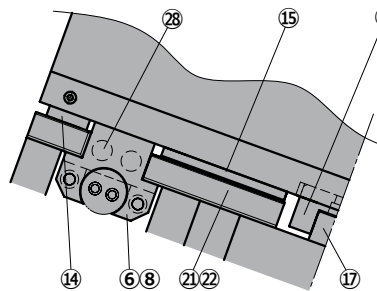
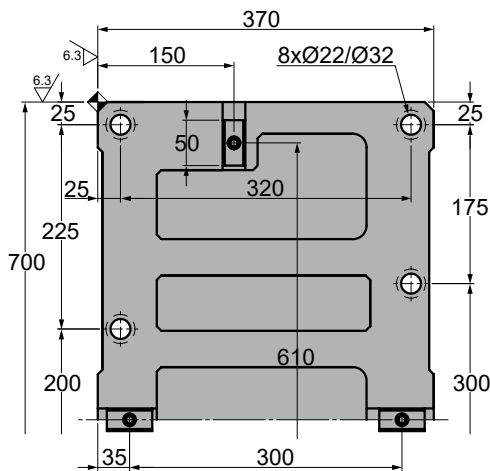
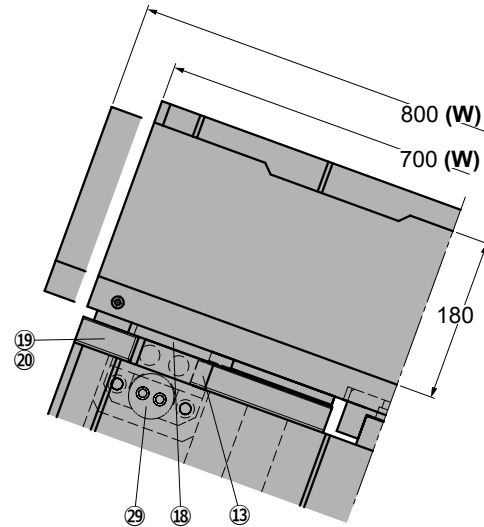
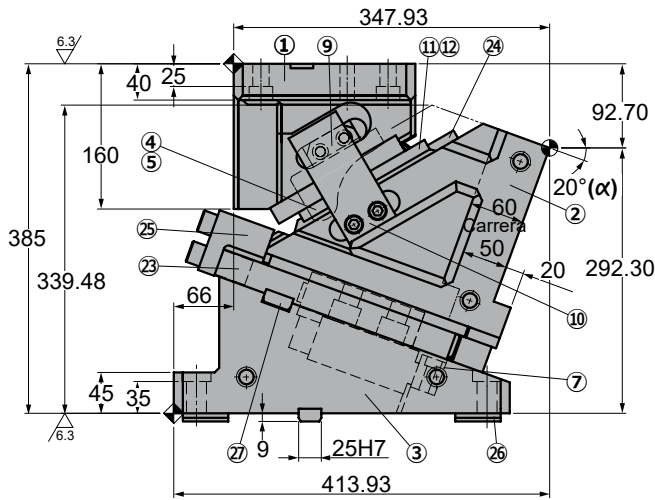
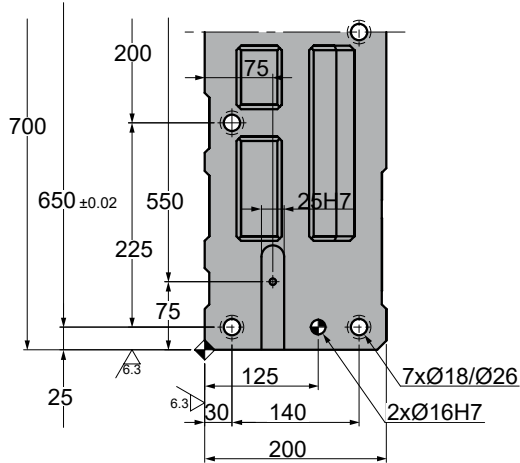
No.	Description	Qty.	Material
⑯	Central Guide Plate A	1	CK45
⑰	Central Guide Plate B	1	Bronze + G
⑱	Base Plate A	2	CK45
⑲	Base Plate B	1	CK45
⑳	Base Plate C	1	CK45
㉑	Base Plate D	1	CK45
㉒	Base Plate E	1	CK45
㉓	Stopper Plate	2	CK45
㉔	Bracket Block	1	
㉕	Locking plate	2	CK45
㉖	Key A	4	CK45
㉗	Key B	6	CK45
㉘	Stopper	4	Urethane
㉙	Gas Spring	2	FD 750 063

# LSLD 0700-0800

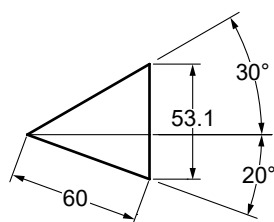
Die mounted cam for pierce and flange



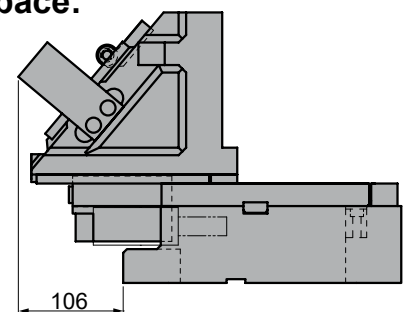
## LSLD 0700 20 LSLD 0800 20



### ◦Cam diagram:



### ◦Disassembling space:







# LSLD 0700-0800

Die mounted cam for pierce and flange

Stroke (mm)	Working force kN - (tons)		Spring Force N - (kgf)		Weight (Kg)	Model	W (mm)	$\alpha$ (mm)
	(1 Million Strokes)	(300.000 Strokes)	Initial F <sub>0</sub>	Final F <sub>1</sub>				
60.0	470.4 (48.0)	1411.2 (144.0)	0.0 (0.0)	20800.0 (2121.0)	410	LSLD	0700	20
					418		0800	



Order: Model (W) ( $\alpha$ )

**LSLD 0700 20**

Standard order example according to catalog sheet. Add options applying options table contents.

## OPTIONS


Order Options: Model (W) ( $\alpha$ )-Option



**SPARE PARTS:**

⑲ Gas Spring

## COMPONENTS

No.	Description	Qty.	Material
①	Cam Holder	1	GG25
②	Cam Slider	1	GG25
③	Cam Driver	1	GG25
④	Cam Slider Plate A	2	Bronze + G
⑤	Cam Slider Plate B	4	Bronze + G
⑥	Spring Guide	2	Bronze + G
⑦	Shaft Guide Block	2	CK22
⑧	Spring Guide Plate	2	CK22
⑨	Positive Return A	2	Bronze + G
⑩	Positive Return B	2	CK45
⑪	Lower Plate A	2	CK45
⑫	Lower Plate B	4	CK45
⑬	Lower Cam Slider Plate A	2	Bronze + G
⑭	Lower Cam Slider Plate B	2	Bronze + G
⑮	Lower Cam Slider Plate C	2	Bronze + G

No.	Description	Qty.	Material
⑯	Central Guide Plate A	1	CK45
⑰	Central Guide Plate B	1	Bronze + G
⑱	Base Plate A	2	CK45
⑲	Base Plate B	1	CK45
⑳	Base Plate C	1	CK45
㉑	Base Plate D	1	CK45
㉒	Base Plate E	1	CK45
㉓	Stopper Plate	2	CK45
㉔	Bracket Block	1	
㉕	Locking plate	2	CK45
㉖	Key A	4	CK45
㉗	Key B	6	CK45
㉘	Stopper	4	Urethane
㉙	Gas Spring	2	FD 750 063

# LSLD 0700-0800

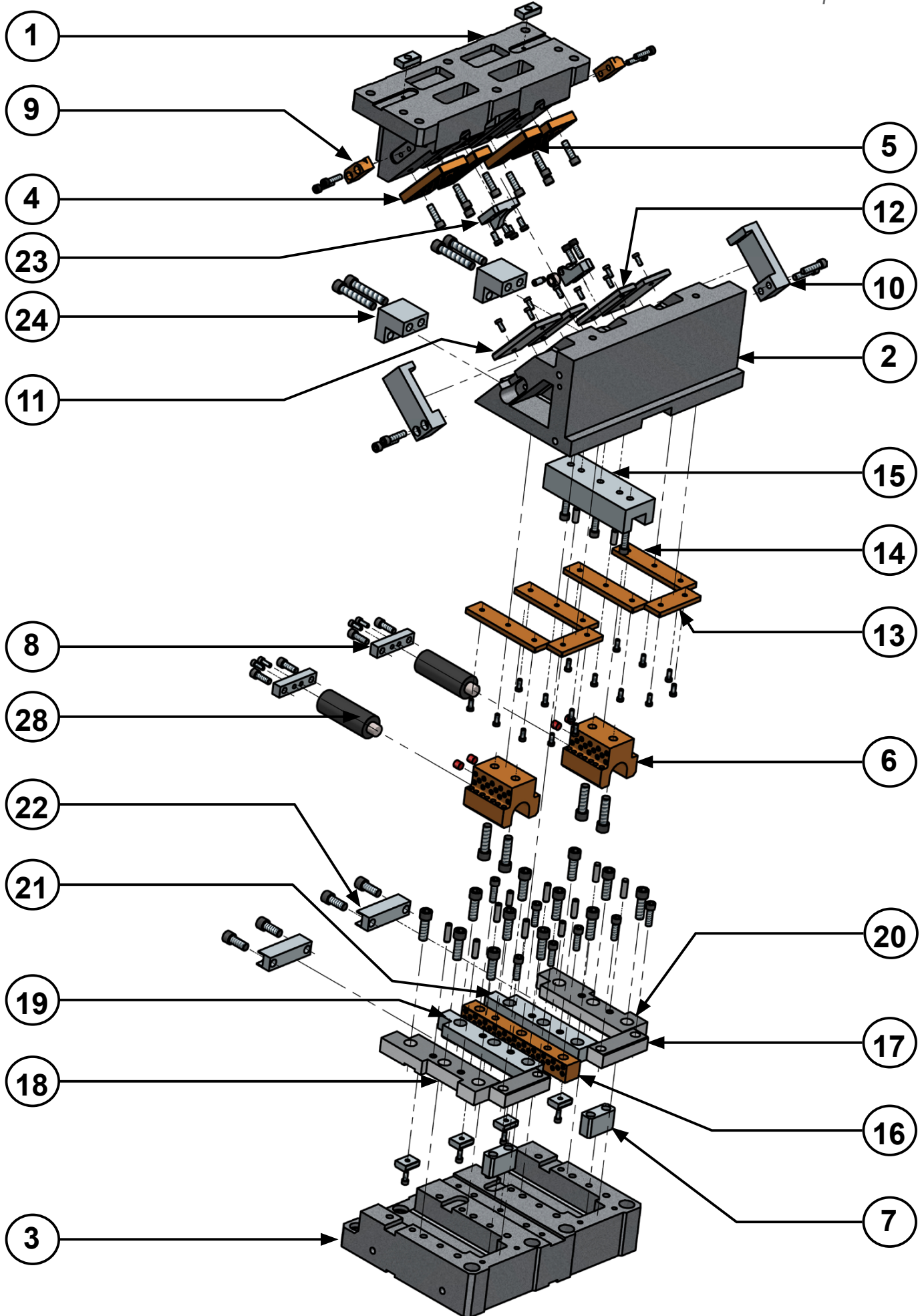


*Die mounted cam for pierce and flange*



# LSLD 0900-1000

Die mounted cam for pierce and flange

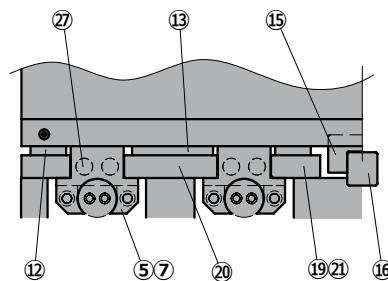
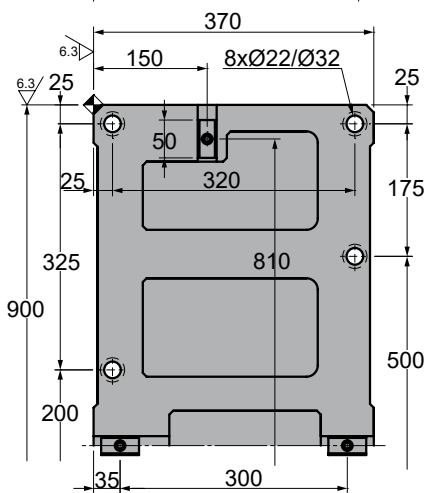
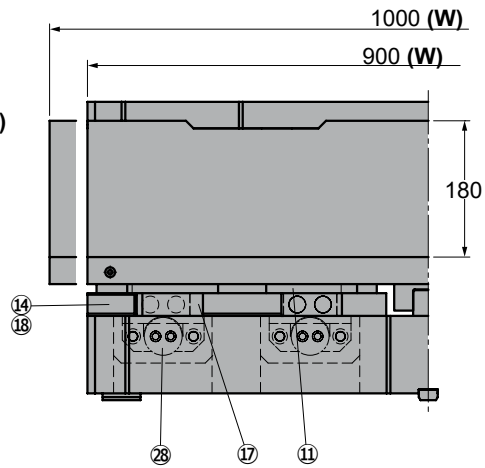
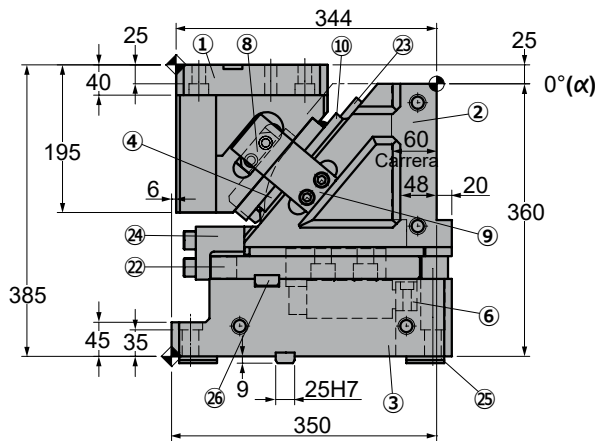
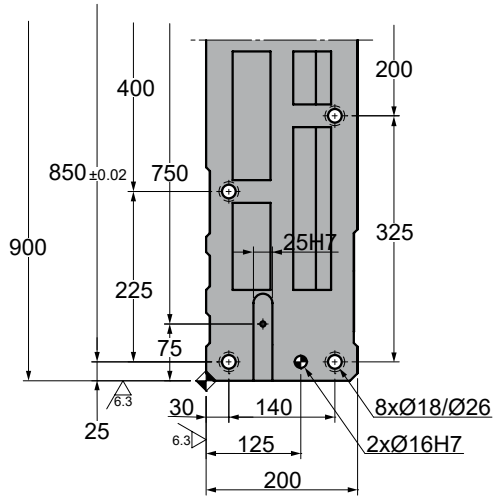


# LSLD 0900-1000

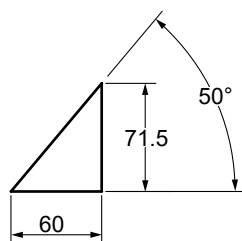
Die mounted cam for pierce and flange



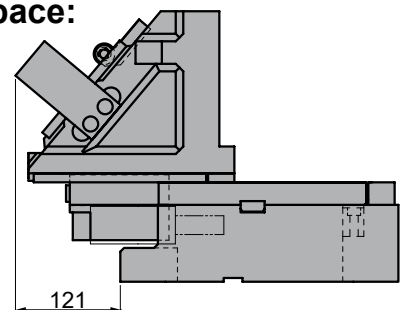
**LSLD 0900 00**  
**LSLD 1000 00**



◦Cam diagram:



◦Disassembling space:



**AZOL**  
**GAS**


# LSLD 0900-1000

Die mounted cam for pierce and flange

Stroke (mm)	Working force kN - (tons)		Spring Force N - (kgf)		Weight (Kg)	Model	W (mm)	$\alpha$ (mm)
	(1 Million Strokes)	(300.000 Strokes)	Initial F <sub>0</sub>	Final F <sub>1</sub>				
60.0	627.2 (64.0)	1881.6 (192.0)	0.0 (0.0)	20800.0 (2121.0)	571	LSLD	0900	00
					579		1000	


**Order:** Model (W) ( $\alpha$ )  
**LSLD 0900 00**

 Standard order example according to catalog sheet.  
 Add options applying options table contents.

## OPTIONS


**Order Options:** Model (W) ( $\alpha$ )-Option

**SPARE PARTS:**

28 Gas Spring

## COMPONENTS

No.	Description	Qty.	Material
①	Cam Holder	1	GG25
②	Cam Slider	1	GG25
③	Cam Driver	1	GG25
④	Cam Slider Plate B	7	Bronze + G
⑤	Spring Guide	4	Bronze + G
⑥	Shaft Guide Block	4	CK22
⑦	Spring Guide Plate	4	CK22
⑧	Positive Return A	2	Bronze + G
⑨	Positive Return B	2	CK45
⑩	Lower Plate B	7	CK45
⑪	Lower Cam Slider Plate A	4	CK45
⑫	Lower Cam Slider Plate B	4	CK45
⑬	Lower Cam Slider Plate C	2	Bronze + G
⑭	Base Plate A	1	Bronze + G
⑮	Central Guide Plate A	1	CK45

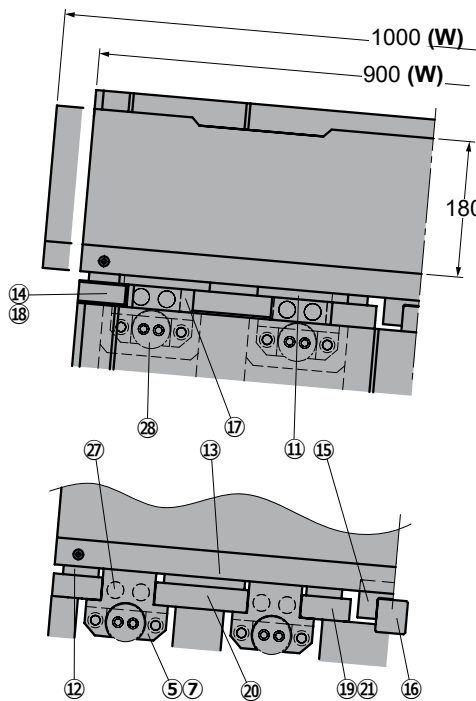
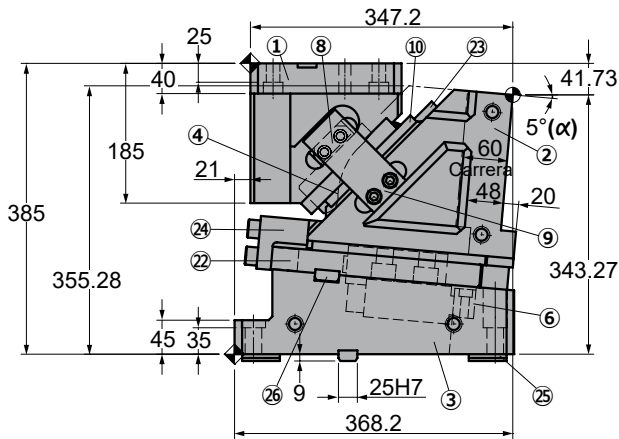
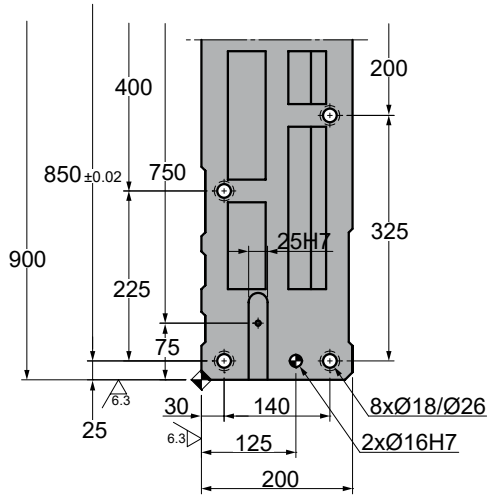
No.	Description	Qty.	Material
⑯	Central Guide Plate B	1	Bronze + G
⑰	Base Plate B	4	CK45
⑱	Base Plate C	1	CK45
⑲	Base Plate D	1	CK45
⑳	Base Plate E	2	CK45
㉑	Base Plate F	1	CK45
㉒	Stopper Plate	4	CK45
㉓	Bracket Block	1	CK45
㉔	Locking plate	2	CK45
㉕	Key A	4	CK45
㉖	Key B	6	CK45
㉗	Stopper	8	Urethane
㉘	Gas Spring	2	FD 750 063

# LSLD 0900-1000

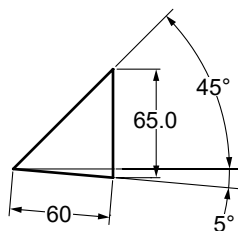
Die mounted cam for pierce and flange



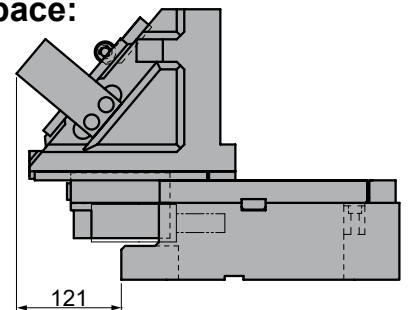
## LSLD 0900 05 LSLD 1000 05



### Cam diagram:



### Disassembling space:





# LSLD 0900-1000

Die mounted cam for pierce and flange

Stroke (mm)	Working force kN - (tons)		Spring Force N - (kgf)		Weight (Kg)	Model	W (mm)	$\alpha$ (mm)
	(1 Million Strokes)	(300.000 Strokes)	Initial F <sub>0</sub>	Final F <sub>1</sub>				
60.0	627.2 (64.0)	1881.6 (192.0)	0.0 (0.0)	20800.0 (2121.0)	560	LSLD	0900	05
					569		1000	



Order: Model (W) ( $\alpha$ )  
**LSLD 0900 05**

Standard order example according to catalog sheet.  
 Add options applying options table contents.

## OPTIONS


Order Options: Model (W) ( $\alpha$ )-Option



**SPARE PARTS:**  
 28 Gas Spring

## COMPONENTS

No.	Description	Qty.	Material
①	Cam Holder	1	GG25
②	Cam Slider	1	GG25
③	Cam Driver	1	GG25
④	Cam Slider Plate B	7	Bronze + G
⑤	Spring Guide	4	Bronze + G
⑥	Shaft Guide Block	4	CK22
⑦	Spring Guide Plate	4	CK22
⑧	Positive Return A	2	Bronze + G
⑨	Positive Return B	2	CK45
⑩	Lower Plate B	7	CK45
⑪	Lower Cam Slider Plate A	4	CK45
⑫	Lower Cam Slider Plate B	4	CK45
⑬	Lower Cam Slider Plate C	2	Bronze + G
⑭	Base Plate A	1	Bronze + G
⑮	Central Guide Plate A	1	CK45

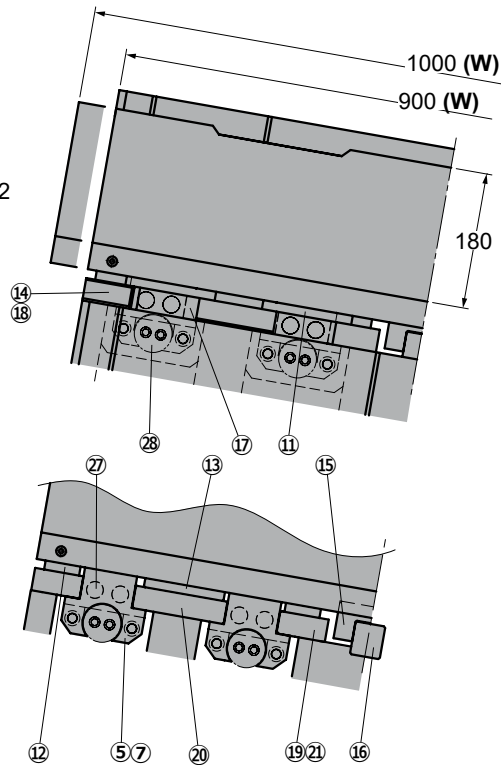
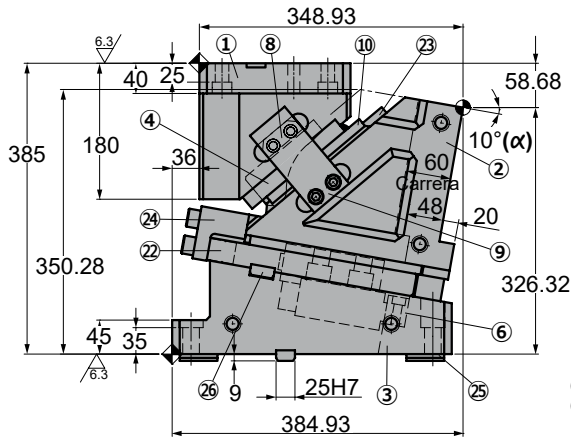
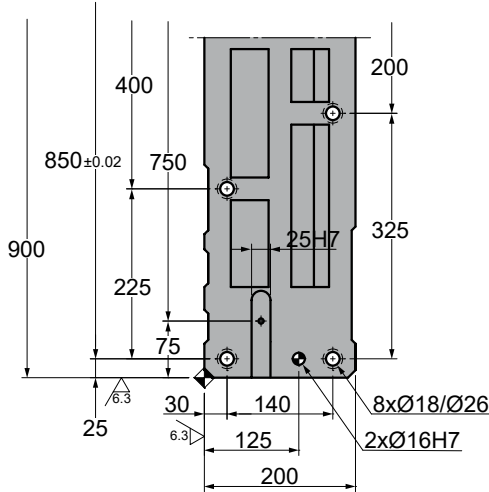
No.	Description	Qty.	Material
⑯	Central Guide Plate B	1	Bronze + G
⑰	Base Plate B	4	CK45
⑱	Base Plate C	1	CK45
⑲	Base Plate D	1	CK45
⑳	Base Plate E	2	CK45
㉑	Base Plate F	1	CK45
㉒	Stopper Plate	4	CK45
㉓	Bracket Block	1	CK45
㉔	Locking plate	2	CK45
㉕	Key A	4	CK45
㉖	Key B	6	CK45
㉗	Stopper	8	Urethane
㉘	Gas Spring	2	FD 750 063

# LSLD 0900-1000

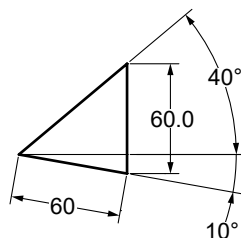
Die mounted cam for pierce and flange



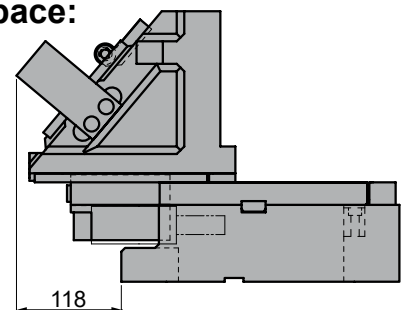
## LSLD 0900 10 LSLD 1000 10



### ◦Cam diagram:



### ◦Disassembling space:





**AZOL**  
**GAS**


# LSLD 0900-1000

*Die mounted cam for pierce and flange*

Stroke (mm)	Working force kN - (tons)		Spring Force N - (kgf)		Weight (Kg)	Model	W (mm)	$\alpha$ (mm)
	(1 Million Strokes)	(300.000 Strokes)	Initial F <sub>0</sub>	Final F <sub>1</sub>				
60.0	627.2 (64.0)	1881.6 (192.0)	0.0 (0.0)	20800.0 (2121.0)	551	LSLD	0900	10
					560		1000	


**Order: Model (W) ( $\alpha$ )**
**LSLD 0900 10**

 Standard order example according to catalog sheet.  
 Add options applying options table contents.

## OPTIONS


**Order Options: Model (W) ( $\alpha$ )-Option**

**SPARE PARTS:**

28 Gas Spring

## COMPONENTS

No.	Description	Qty.	Material
①	Cam Holder	1	GG25
②	Cam Slider	1	GG25
③	Cam Driver	1	GG25
④	Cam Slider Plate B	7	Bronze + G
⑤	Spring Guide	4	Bronze + G
⑥	Shaft Guide Block	4	CK22
⑦	Spring Guide Plate	4	CK22
⑧	Positive Return A	2	Bronze + G
⑨	Positive Return B	2	CK45
⑩	Lower Plate B	7	CK45
⑪	Lower Cam Slider Plate A	4	CK45
⑫	Lower Cam Slider Plate B	4	CK45
⑬	Lower Cam Slider Plate C	2	Bronze + G
⑭	Base Plate A	1	Bronze + G
⑮	Central Guide Plate A	1	CK45

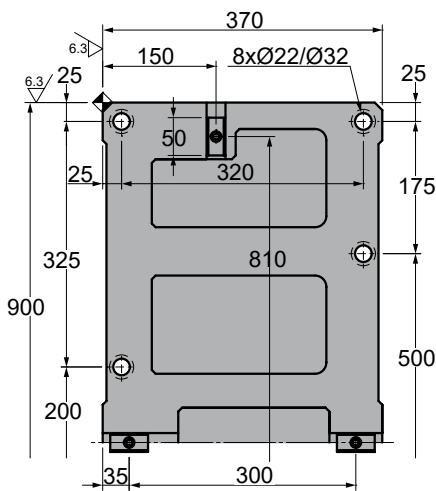
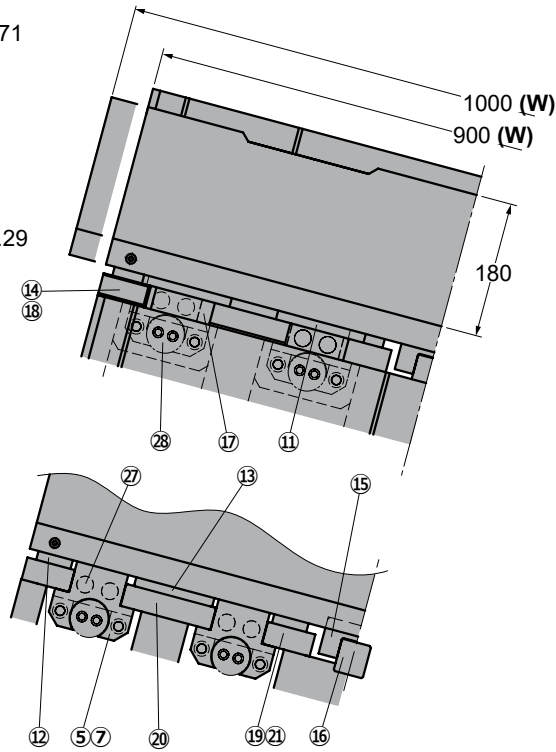
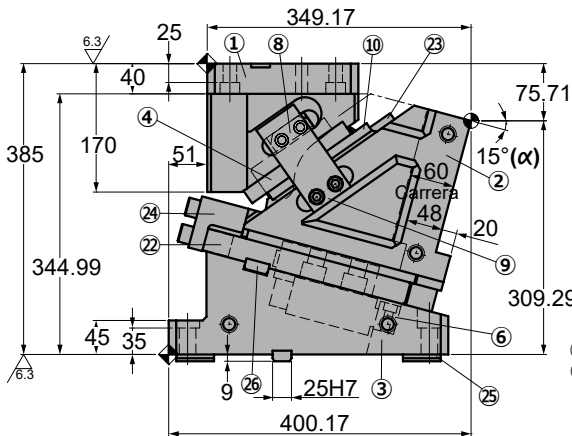
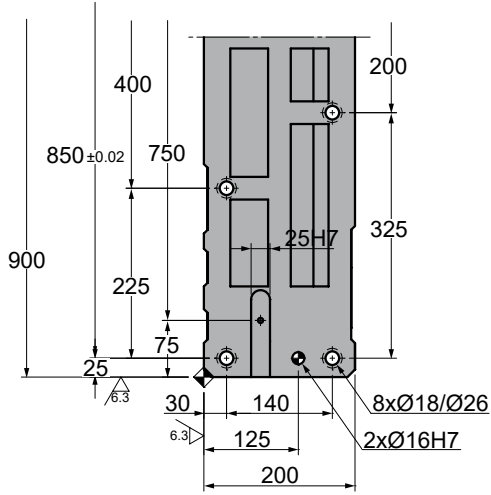
No.	Description	Qty.	Material
⑯	Central Guide Plate B	1	Bronze + G
⑰	Base Plate B	4	CK45
⑱	Base Plate C	1	CK45
⑲	Base Plate D	1	CK45
⑳	Base Plate E	2	CK45
㉑	Base Plate F	1	CK45
㉒	Stopper Plate	4	CK45
㉓	Bracket Block	1	CK45
㉔	Locking plate	2	CK45
㉕	Key A	4	CK45
㉖	Key B	6	CK45
㉗	Stopper	8	Urethane
㉘	Gas Spring	2	FD 750 063

# LSLD 0900-1000

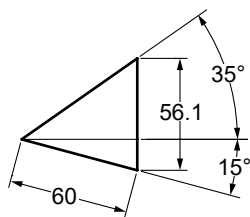
Die mounted cam for pierce and flange



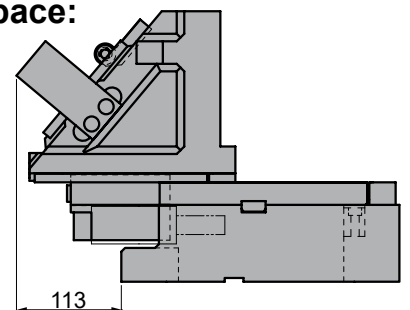
## LSLD 0900 15 LSLD 1000 15



◦Cam diagram:



◦Disassembling space:





# LSLD 0900-1000

Die mounted cam for pierce and flange

Stroke (mm)	Working force kN - (tons)		Spring Force N - (kgf)		Weight (Kg)	Model	W (mm)	$\alpha$ (mm)
	(1 Million Strokes)	(300.000 Strokes)	Initial F <sub>0</sub>	Final F <sub>1</sub>				
60.0	627.2 (64.0)	1881.6 (192.0)	0.0 (0.0)	20800.0 (2121.0)	543	LSLD	0900	15
					551		1000	



Order: Model (W) ( $\alpha$ )  
**LSLD 0900 15**

Standard order example according to catalog sheet.  
Add options applying options table contents.

## OPTIONS


Order Options: Model (W) ( $\alpha$ )-Option



**SPARE PARTS:**

⑳ Gas Spring

## COMPONENTS

No.	Description	Qty.	Material
①	Cam Holder	1	GG25
②	Cam Slider	1	GG25
③	Cam Driver	1	GG25
④	Cam Slider Plate B	7	Bronze + G
⑤	Spring Guide	4	Bronze + G
⑥	Shaft Guide Block	4	CK22
⑦	Spring Guide Plate	4	CK22
⑧	Positive Return A	2	Bronze + G
⑨	Positive Return B	2	CK45
⑩	Lower Plate B	7	CK45
⑪	Lower Cam Slider Plate A	4	CK45
⑫	Lower Cam Slider Plate B	4	CK45
⑬	Lower Cam Slider Plate C	2	Bronze + G
⑭	Base Plate A	1	Bronze + G
⑮	Central Guide Plate A	1	CK45

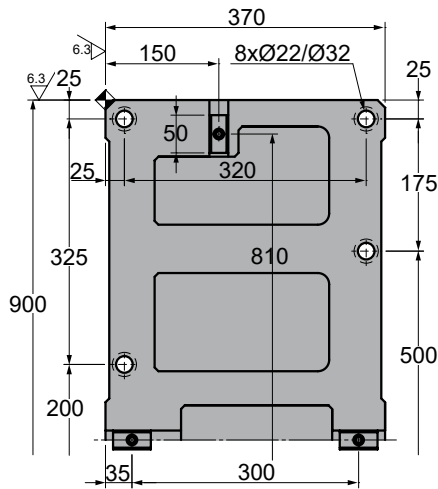
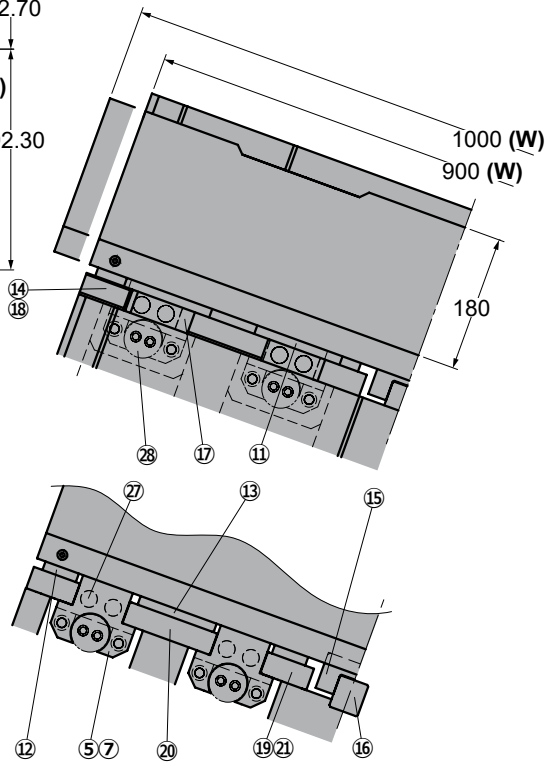
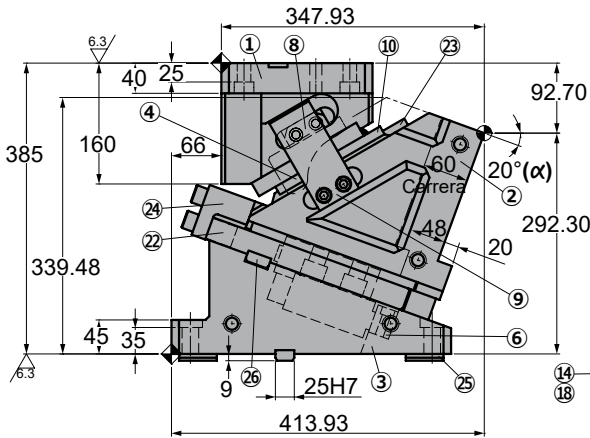
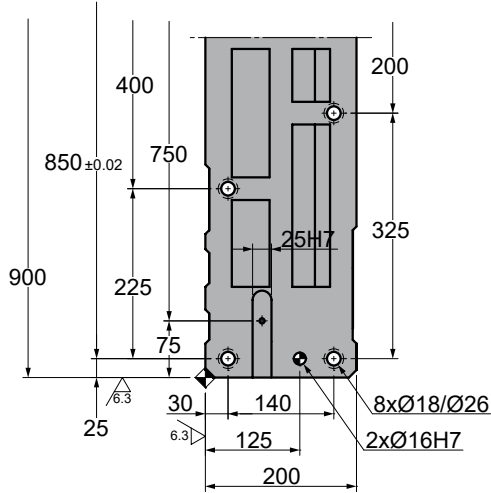
No.	Description	Qty.	Material
⑯	Central Guide Plate B	1	Bronze + G
⑰	Base Plate B	4	CK45
⑱	Base Plate C	1	CK45
⑲	Base Plate D	1	CK45
⑳	Base Plate E	2	CK45
㉑	Base Plate F	1	CK45
㉒	Stopper Plate	4	CK45
㉓	Bracket Block	1	CK45
㉔	Locking plate	2	CK45
㉕	Key A	4	CK45
㉖	Key B	6	CK45
㉗	Stopper	8	Urethane
㉘	Gas Spring	2	FD 750 063

# LSLD 0900-1000

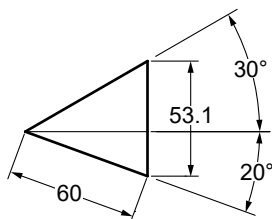
Die mounted cam for pierce and flange



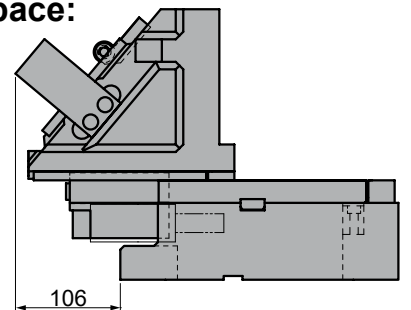
## LSLD 0900 20 LSLD 1000 20



### Cam diagram:



### Disassembling space:





# LSLD 0900-1000

Die mounted cam for pierce and flange

Stroke (mm)	Working force kN - (tons)		Spring Force N - (kgf)		Weight (Kg)	Model	W (mm)	$\alpha$ (mm)
	(1 Million Strokes)	(300.000 Strokes)	Initial F <sub>0</sub>	Final F <sub>1</sub>				
60.0	627.2 (64.0)	1881.6 (192.0)	0.0 (0.0)	20800.0 (2121.0)	536	LSLD	0900	20
					544		1000	



Order: Model (W) ( $\alpha$ )  
**LSLD 0900 20**

Standard order example according to catalog sheet.  
 Add options applying options table contents.

## OPTIONS


Order Options: Model (W) ( $\alpha$ )-Option



**SPARE PARTS:**

Ⓔ Gas Spring

## COMPONENTS

No.	Description	Qty.	Material
①	Cam Holder	1	GG25
②	Cam Slider	1	GG25
③	Cam Driver	1	GG25
④	Cam Slider Plate B	7	Bronze + G
⑤	Spring Guide	4	Bronze + G
⑥	Shaft Guide Block	4	CK22
⑦	Spring Guide Plate	4	CK22
⑧	Positive Return A	2	Bronze + G
⑨	Positive Return B	2	CK45
⑩	Lower Plate B	7	CK45
⑪	Lower Cam Slider Plate A	4	CK45
⑫	Lower Cam Slider Plate B	4	CK45
⑬	Lower Cam Slider Plate C	2	Bronze + G
⑭	Base Plate A	1	Bronze + G
⑮	Central Guide Plate A	1	CK45

No.	Description	Qty.	Material
⑯	Central Guide Plate B	1	Bronze + G
⑰	Base Plate B	4	CK45
⑱	Base Plate C	1	CK45
⑲	Base Plate D	1	CK45
⑳	Base Plate E	2	CK45
㉑	Base Plate F	1	CK45
㉒	Stopper Plate	4	CK45
㉓	Bracket Block	1	CK45
㉔	Locking plate	2	CK45
㉕	Key A	4	CK45
㉖	Key B	6	CK45
㉗	Stopper	8	Urethane
㉘	Gas Spring	2	FD 750 063

# LSLD 0900-1000



*Die mounted cam for pierce and flange*

[www.rodavigo.net](http://www.rodavigo.net)

+34 986 288118  
Servicio de Att. al Cliente

[www.azolgas.com](http://www.azolgas.com) *Service in motion*

[azolgas@azolgas.com](mailto:azolgas@azolgas.com)

Tel. +34 945290010



**CAM UNITS**

# CAM UNITS







# CAM UNITS





Landalucía, 7, P.I. Júndiz  
01015 Vitoria-Gasteiz  
Tel.: +34 945 290 010  
Fax: +34 945 290 381

[azolgas@azolgas.com](mailto:azolgas@azolgas.com)  
[www.azolgas.com](http://www.azolgas.com)